

GOVE

COLLECTION



ELITSER

From The House of RESTILE

Where Coastal Calm
Meets Architecture

GOVE by ELITSER

COLLECTION THE EVERYDAY FULL BODY TILES

Gove draws from Goa's coastline, where sand, stone, and sea exist in balance. Surfaces shaped by time reveal a soft, continuous texture.

Coastal calm, expressed in surface. A calm expression of the coast. Surfaces shaped by natural balance.



GOVE by ELITSER

From The House of RESTILE

Designed for Everyday Architecture

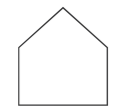


Gove is created for spaces where architecture is experienced daily, not simply observed. Its balanced textures and coastal tones are developed to support natural light, movement, and material continuity, allowing interiors to feel open, grounded, and composed over time.

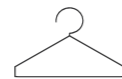
Across residential and commercial environments, the collection adapts with quiet confidence. The surfaces provide a refined backdrop that complements structure and form, offering durability, visual calm, and a sense of ease suited to contemporary living.

Applications

Created for everyday environments that demand balance between durability and visual calm.



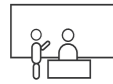
Resedentials



Malls



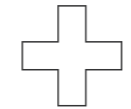
Airports



Classrooms



Restaurants



Hospitals



Retail Stores



Offices

Gove is developed to perform across environments that demand both durability and visual continuity. Its balanced texture and full-body composition allow the surface to remain consistent over time, supporting spaces shaped by daily movement, light, and interaction.

From private interiors to high-traffic environments, Gove integrates naturally into architecture that values material restraint and long-term reliability. The surface maintains calm expression while meeting functional requirements, making it suitable for a wide range of everyday applications.



Gove Collection

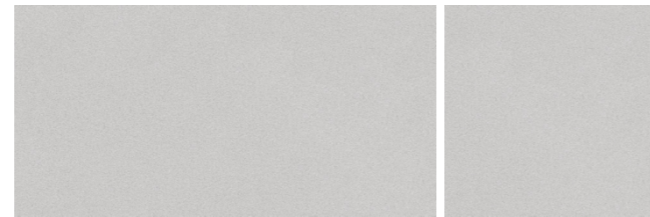
Palolem

Formats: 60x120cm / 60x60cm
Finish: Polished



Varca

Formats: 60x120cm / 60x60cm
Finish: Polished



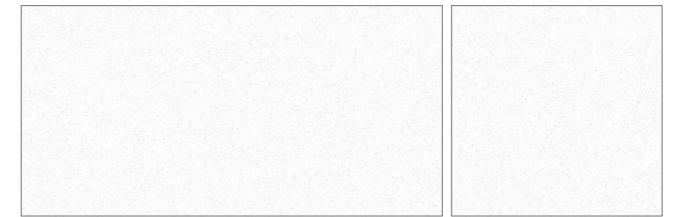
Baga

Formats: 60x120cm / 60x60cm
Finish: Polished



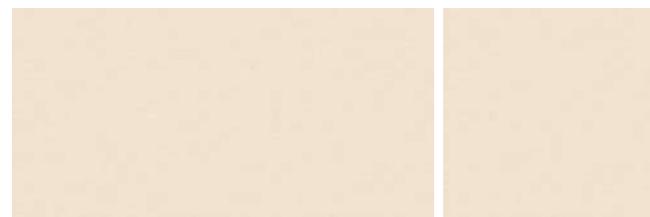
Arambol

Formats: 60x120cm / 60x60cm
Finish: Polished



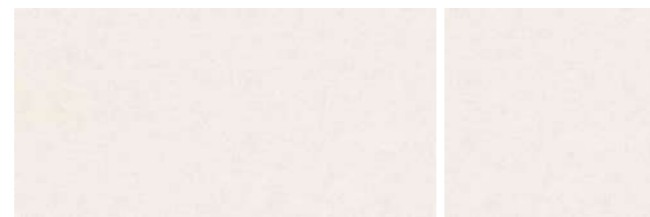
Vagator

Formats: 60x120cm / 60x60cm
Finish: Polished



Ozran

Formats: 60x120cm / 60x60cm
Finish: Polished



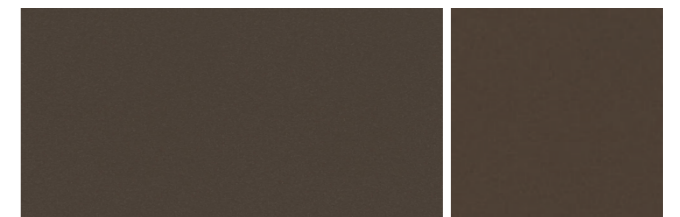
Colva

Formats: 60x120cm / 60x60cm
Finish: Polished



Ashwem

Formats: 60x120cm / 60x60cm
Finish: Polished



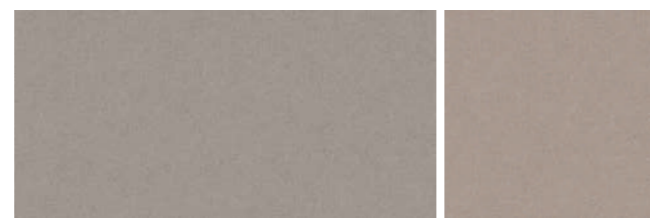
Anjuna

Formats: 60x120cm / 60x60cm
Finish: Polished



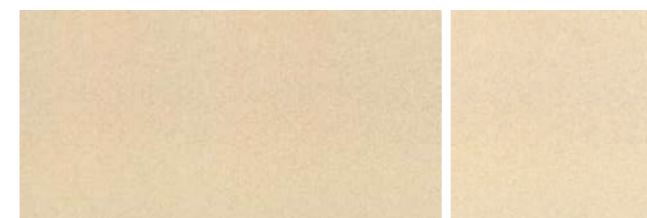
Miramar

Formats: 60x120cm / 60x60cm
Finish: Polished



Agonda

Formats: 60x120cm / 60x60cm
Finish: Polished



Morjim

Formats: 60x120cm / 60x60cm
Finish: Polished



GOVE by ELITSER

From The House of RESTILE



Palolem

Format: 60x60cm

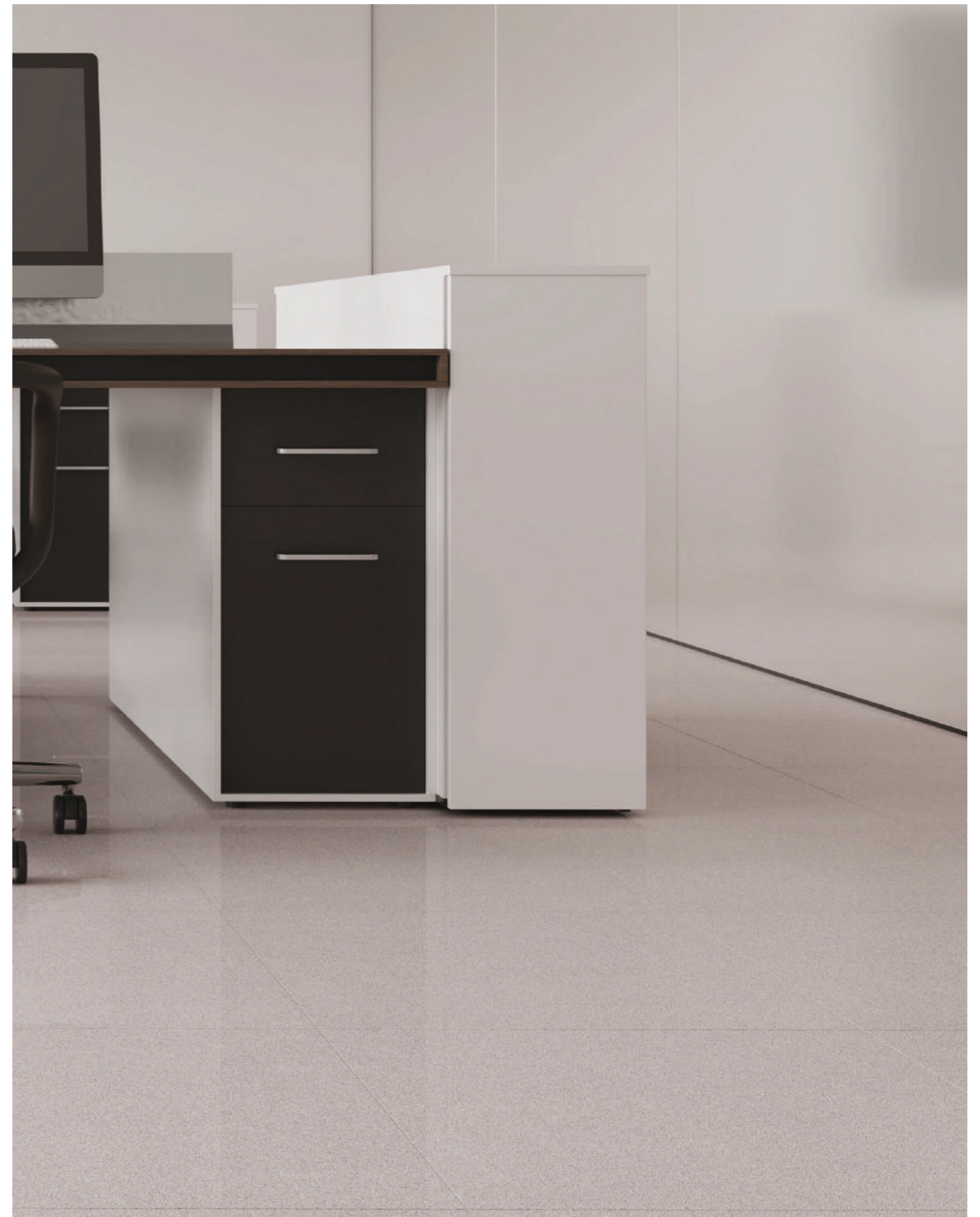
Finish: Polished



1 / 4



Vagator reflects the quiet clarity of coastal surfaces shaped by light and time. Its soft, polished finish enhances the natural warmth of the tone, creating a surface that feels continuous and composed. Subtle grain movement adds depth without visual noise, allowing the tile to read as calm and expansive across large areas.



PALOLEM
Wall: Palolem | Floor: Palolem



Varca

Formats: 60x120cm / 60x60cm

Finish: Polished



1 / 4



Varca features a soft light grey surface defined by delicate mineral speckling. Its polished finish enhances brightness and tonal clarity while maintaining a calm and seamless visual character. Designed for contemporary interiors, Varca brings balance, lightness, and refined durability to modern architectural spaces.



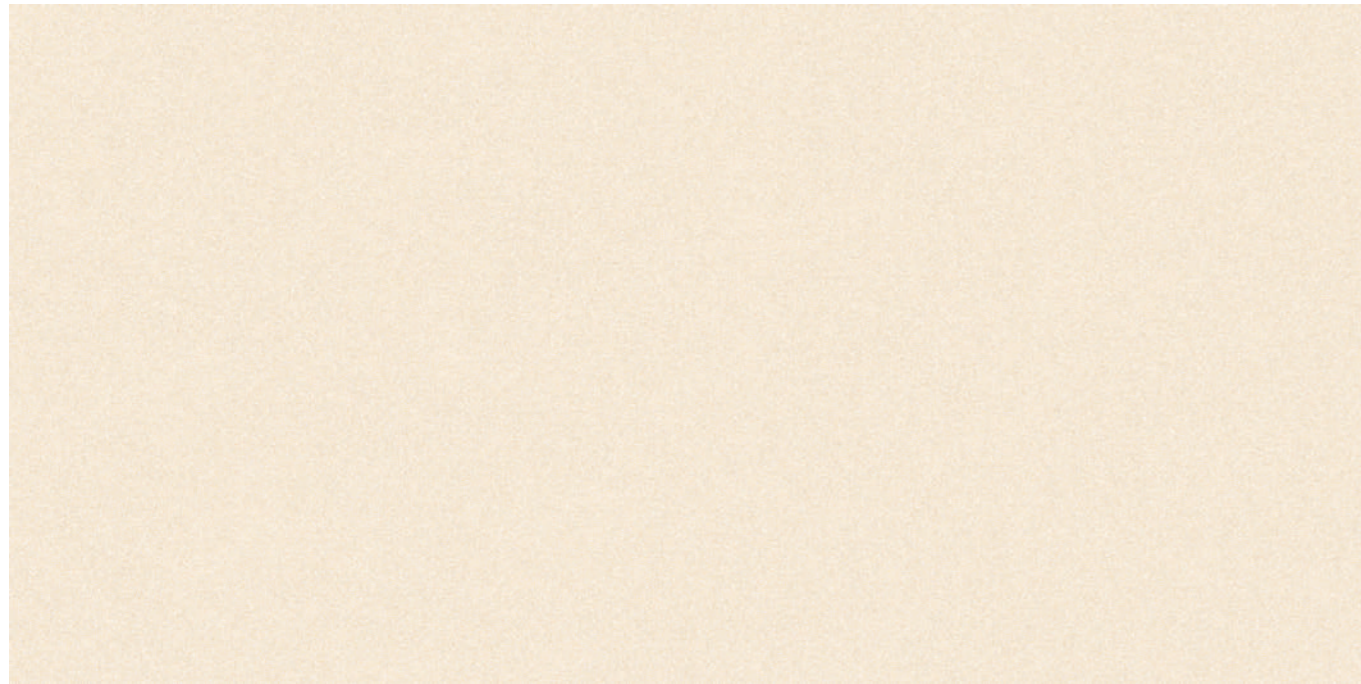
VARCA
Wall: Varca | Floor: Varca



Vagator

Formats: 60x120cm / 60x60cm

Finish: Polished



1 / 4



Vagator reflects the quiet clarity of coastal surfaces shaped by light and time. Its soft, polished finish enhances the natural warmth of the tone, creating a surface that feels continuous and composed. Subtle grain movement adds depth without visual noise, allowing the tile to read as calm and expansive across large areas.



VAGATOR
Wall: Vagator | Floor: Vagator

GOVE by ELITSER

From The House of RESTILE



Ozran

Formats: 60x120cm / 60x60cm

Finish: Polished



1 / 4



Vagator reflects the quiet clarity of coastal surfaces shaped by light and time. Its soft, polished finish enhances the natural warmth of the tone, creating a surface that feels continuous and composed. Subtle grain movement adds depth without visual noise, allowing the tile to read as calm and expansive across large areas.



OZRAN
Wall: Ozran | Floor: Ozran



Anjuna

Formats: 60x120cm / 60x60cm

Finish: Polished



1 / 4



Anjuna features a warm sand-toned surface enriched with fine mineral speckling. Its polished finish enhances natural brightness while maintaining a calm and continuous visual flow. Designed for contemporary interiors, Anjuna brings warmth, balance, and refined clarity to modern architectural spaces.



ANJUNA
Wall: Anjuna | Floor: Anjuna



Miramar

Formats: 60x120cm

Finish: Polished



1 / 4



Miramar features a soft taupe surface enriched with delicate mineral speckling. Its polished finish enhances tonal warmth and subtle depth while maintaining a calm and seamless visual character. Designed for contemporary interiors, Miramar brings balance, softness, and refined durability to modern architectural spaces.



MIRAMAR
Floor: Miramar

GOVE by ELITSER

From The House of RESTILE

WELLNESS & SPA



Baga

Formats: 60x120cm / 60x60cm

Finish: Polished



1 / 4



Baga presents a warm sand-toned surface defined by fine mineral grain and balanced texture. Its polished finish enhances light reflection while maintaining a calm and continuous visual flow. Designed for contemporary interiors, Baga brings softness, clarity, and architectural harmony to spaces that value understated elegance.



BAGA
Wall: Baga | Floor: Baga



Arambol

Formats: 60x120cm / 60x60cm

Finish: Polished



1 / 4



Arambol presents a soft white surface defined by delicate mineral speckling and refined tonal clarity. Its polished finish enhances brightness while maintaining a calm and seamless visual character. Designed for contemporary interiors, Arambol brings lightness, balance, and quiet sophistication to architectural spaces.



ARAMBOL
Wall: Arambol | Floor: Arambol

Colva

Formats: 60x120cm / 60x60cm

Finish: Polished



1 / 4



Colva features a deep grey surface enriched with fine mineral texture. Its polished finish enhances tonal depth while maintaining a calm and composed visual presence. Designed for contemporary interiors, Colva brings strength, balance, and refined durability to modern architectural spaces.



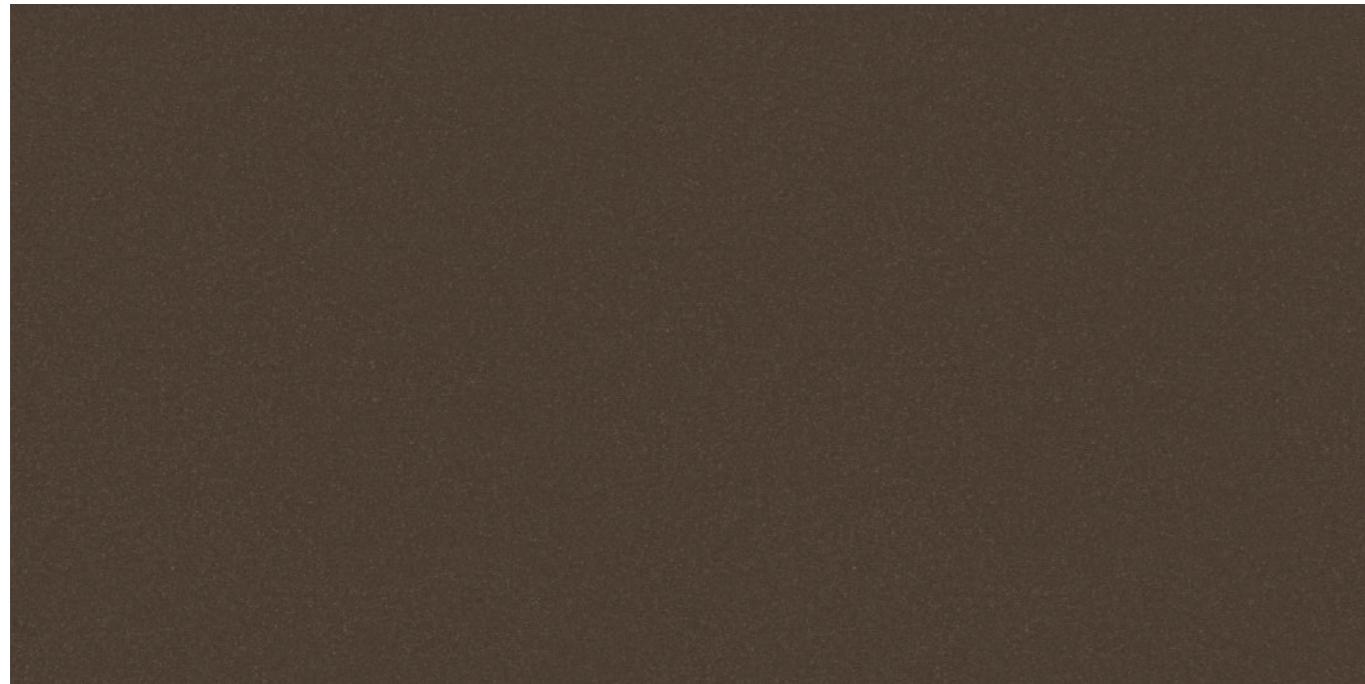
COLVA
Wall: Colva | Floor: Ozran



Ashwem

Formats: 60x120cm / 60x60cm

Finish: Polished



1 / 4



Ashwem features a deep earthy base enriched with subtle mineral speckling. Its polished surface enhances tonal warmth while maintaining a calm and composed visual character. Designed for contemporary interiors, Ashwem brings depth, balance, and refined durability to architectural spaces.



ASHWEM
Wall: Ashwem | Floor: Ashwem

GOVE by ELITSER

From The House of RESTILE



Agonda

Formats: 60x120cm / 60x60cm

Finish: Polished



1 / 4



Agonda presents a soft ivory surface enriched with delicate mineral speckling. Its polished finish enhances brightness and subtle tonal warmth while maintaining a calm and seamless visual flow. Designed for contemporary interiors, Agonda brings clarity, balance, and refined elegance to modern architectural spaces.



AGONDA
Wall: Agonda | Floor: Agonda

GOVE by ELITSER

From The House of RESTILE



Morjim

Formats: 60x120cm / 60x60cm

Finish: Polished



1 / 4



Morjim features a warm taupe base enriched with fine mineral texture. Its polished surface enhances depth and softness while maintaining a calm and seamless visual presence. Designed for contemporary interiors, Morjim brings natural balance, warmth, and refined durability to architectural spaces.



MORJIM
Wall: Morjim | Floor: Flamed Sahara

Global Network

Factory Address	Bell Granito Ceramica Limited Village Gavasad, Taluka Padra District Vadodara - 391430 Gujarat, India	E: info@restile.com W: www.restile.com
Exports	Mr. Harinatha Reddy E: exports@restile.com M: +62 8158855781	Address: 5th Floor, 501 The Honey Lady Building Jln Pluit Selatan Raya Kawasan Cbd Pluit, Jakarta 14440 Indonesia
North India	Mr. Jay Jethwa	E: jay.jethwa@restile.com M: +91 99744 08673
East India	Mr. Jay Jethwa	E: jay.jethwa@restile.com M: +91 99744 08673
Rajasthan	Mr. Jay Jethwa	E: jay.jethwa@restile.com M: +91 99744 08673
Gujarat, Madhya Pradesh	Mr. Nikunj Raval	E: nikunj.rawal@restile.com M: +91 76000 55820
Maharashtra, Chhattisgarh	Mrs. Hasmita Chauhan	E: hasmita.taunk@restile.com M: +91 77380 60818
Karnataka	Mrs. Hasmita Chauhan	E: hasmita.taunk@restile.com M: +91 77380 60818
Andhra Pradesh, Telangana, Tamil Nadu, Kerala	Mr. Amit Vaghela	E: amit.vaghela@restile.com M: +91 74860 15781