



The Original Full Body Tiles.
restile.com

FULL BODY.



UNGLAZED.UNCOATED.



ARCHITECTS CHOICE.



ANTI SKID



The Original Full Body Tiles

Welcome to Restile,
Where strength meets timeless design. Every surface we
create carries a legacy of precision, trust and elegance.

The Essence of Restile

Shaping surfaces since 1986.

The essence of Restile is built upon a pioneering spirit that has shaped the landscape of Indian architecture and design. Established in 1986, Restile became the first to introduce full body vitrified tiles to the nation, marking a defining moment in the evolution of modern surfaces. What began as an innovation has grown into a legacy of material integrity, architectural precision and timeless craftsmanship.

For decades, Restile has stood as a trusted name among architects, designers and builders who value surfaces that endure and inspire. Our philosophy is anchored in the belief that true architectural beauty emerges from the authenticity of materials and the precision of their making. Each tile is crafted as a complete form, uniform in structure, tone and character from surface to core. This intrinsic strength allows our surfaces to transcend function and become permanent elements of built spaces.

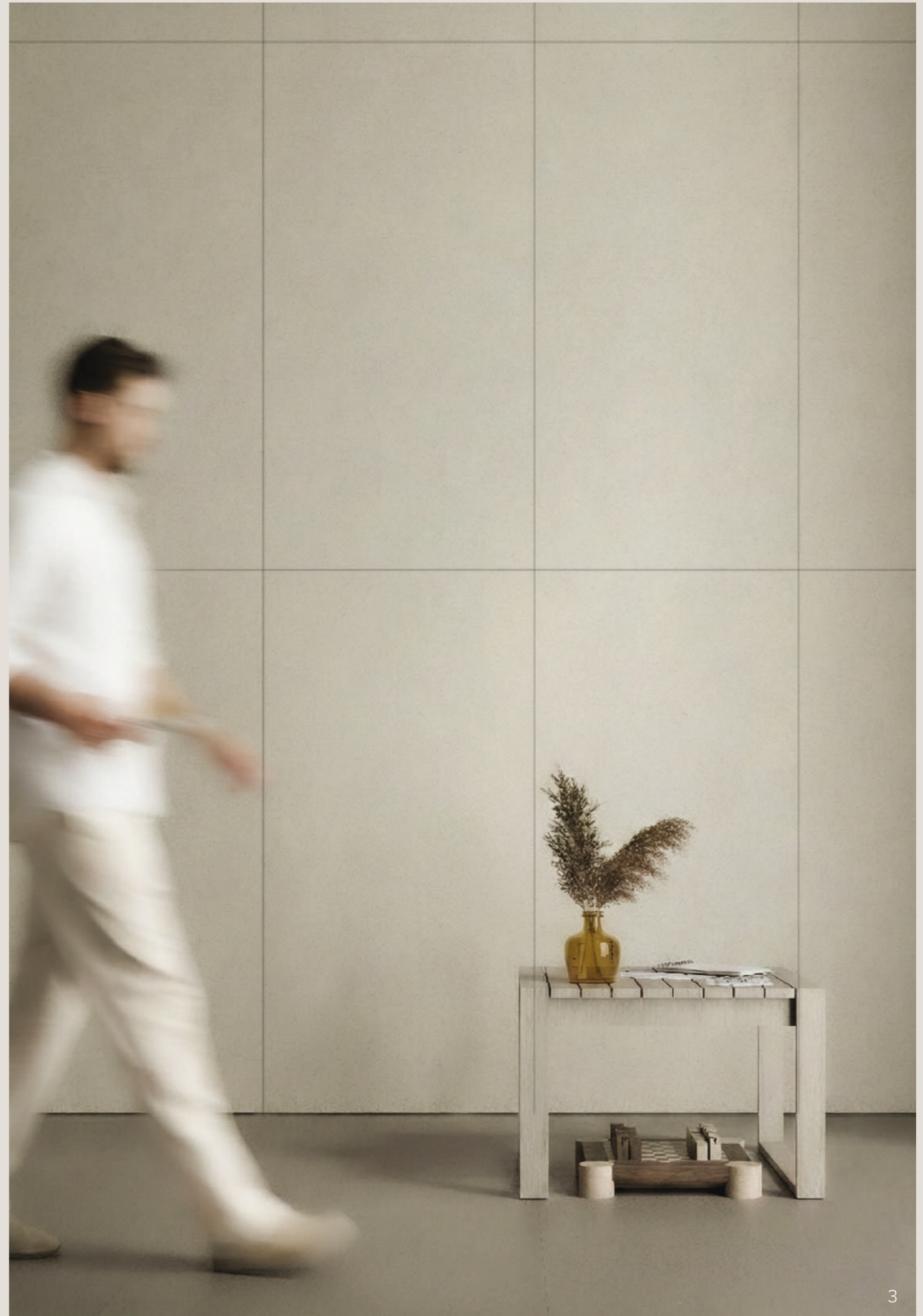
Our collections carry forward this legacy of innovation. The Step Collection reflects the rhythm of movement within architectural compositions, while the Indust Collection embodies structural clarity and durability.

Together, they represent a commitment to surfaces that respond to the demands of contemporary design while holding the weight of time with quiet confidence.

Every finish and texture is shaped with an architectural mindset, balancing performance with aesthetic refinement. This approach has allowed Restile to remain at the forefront of material innovation, inspiring generations of designers to build with intention and trust.

To choose Restile is to connect with the origin of full body vitrified tile manufacturing in India. It is to embrace a legacy defined by strength, clarity and design excellence. It is to build spaces where surfaces are not simply applied, but composed as integral parts of architectural identity.

The essence of Restile is where innovation meets legacy, where surfaces carry history, and where architecture finds its foundation.



The Architecture of a Legacy



The story of Restile began with a clear vision to redefine the foundation of architectural surfaces in India. In 1986, we introduced the nation's first full body vitrified tiles, setting a new standard for strength, precision and enduring design. This moment marked the beginning of a journey that would influence how spaces are imagined, built and experienced for generations to come.

Over time, Restile grew from a pioneering idea into a trusted name in the world of architectural materials. Our path has been shaped by quiet strength, continuous technological progress and a commitment to excellence. From our earliest production facility to today's advanced infrastructure, every step reflects a dedication to pushing the boundaries of material innovation and design.

Our legacy is carried through the trust placed in us by architects, designers and builders. Restile surfaces have become part of structures that hold cultural, functional and aesthetic significance. They are chosen not only for their strength but also for their ability to express character and permanence within built environments.

This legacy continues to guide everything we create. We honour our history through progress, blending traditional craftsmanship with contemporary design thinking. Each new collection carries forward this spirit of innovation and precision, creating surfaces that support the architectural visions of tomorrow.

Our legacy was not built overnight. It has been crafted through decades of vision, dedication and trust, becoming part of the very architecture it helps create.

Characteristics of Restile Tiles

Restile Characteristics	Homogeneous Vitrified Tiles	Full Body Color
	Through Body Design	Unglazed, Uncoated Surface
Technical Characteristics	Metal Punch Manufacturing	
	Production Output Lesser Because Of Metal Punch Maintenance	
	Metal Punch Gives Unique Restile Matte Surface	
	Restile Surface Is 100% Smooth Matte, With Gloss Value < 6	
	Tile Compaction In Metal Punch Is Very High	
	Heavy Pressure Compaction Ensures No Open Pores On The Surface	
	Density Of Each Tile Per Sqft Is Heavier Than Normal Tiles	
	High Density Ensures Higher Breaking And Impact Strength	
	Water Absorption (WA) Below 0.06%	
	Product Characteristics	No Open Pores On The Surface
No Dust Accumulation On The Surface		
No Glazing Or Transparent Coating Required		
Acid And Alkali Resistant		
Easy To Clean And Maintain		
Restile Matte Is Naturally Anti Skid – Even Under Wet Conditions		
Unglazed Matte Surface – R10		
Unglazed Flamed Surface – R11		

Applications



Surfaces That Adapt Across Various Environments



Residential



Garden & Pool



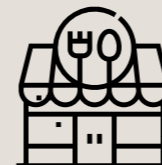
Hotels



Schools & Colleges



Office



Cafe & Restaurant



Supermarket



Malls



Public Spaces



Airport



Metro Station



Industry

Restile surfaces are designed to perform seamlessly across a wide range of environments, from private residences to large-scale public and commercial spaces. Their balanced material character supports everyday living, high footfall movement, and structured architectural layouts with equal ease. Whether applied in homes, gardens, hospitality spaces, workplaces, retail zones, transport hubs, or industrial settings, each surface maintains visual clarity, durability, and functional consistency. This versatility allows designers and planners to create cohesive spaces where material performance and spatial intent work together without compromise.

Surfaces Collections



Chips Collection

Natural textures that reflect the essence of stone.



XL Chips Collection

Expanded scale, refined natural texture.

Makers Collection

Bold surfaces crafted for creative expression.



Solid Collection

Timeless shades shaped with modern simplicity.



Granamite Collection

Mineral-inspired tones with lasting strength.



Steps Collection

Functional surfaces designed for movement and form.



Impacta Collection

Crafted with balance and refined in tone.



Chips Collection



Formats:

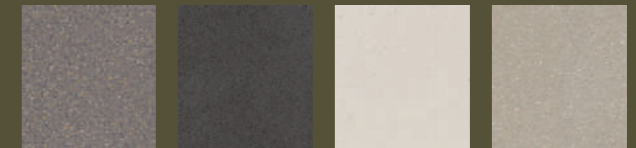


60x120cm



60x60cm

Designs:



Fossil

Iconic

Mist

Pebbles



Metallic Grey

Casablanca

USP:

india's Original Scalia Product

- Full Body Color
- Through Body Design
- Closest Feel to Granite
- Metal Punch Production
- Unique Restile Matt Surface
- Superior Quality
- Unglazed / Uncoated
- Inbuilt Anti Skid Properties $R > = 10$

Every surface begins with an idea. For Restile, that idea comes from the world around us. It comes from the quiet strength of natural elements and the bold precision of architectural structures. The earth gives us the textures, tones and layers that define the essence of our materials. Architecture gives us the forms, proportions and rhythms that shape how spaces are experienced.

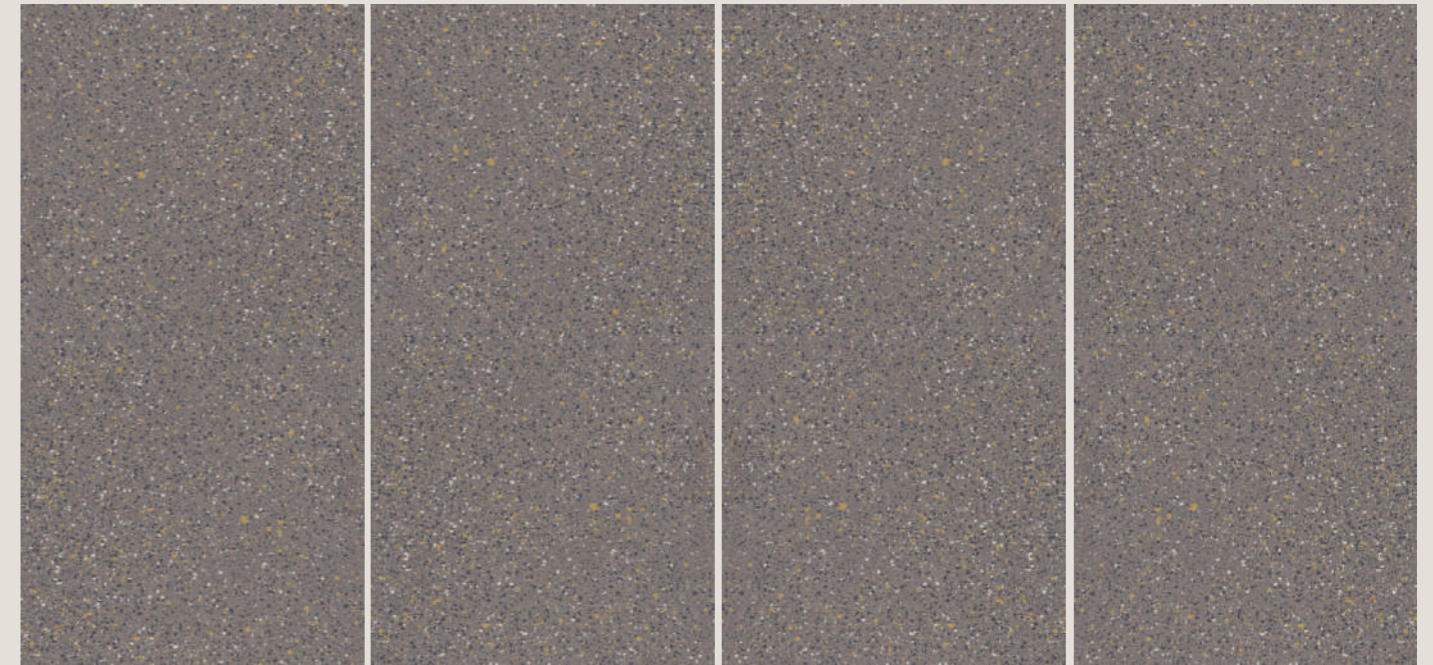
Our collections are born from this balance between nature and structure. The Step Collection draws inspiration from movement, transitions and spatial flow. The Indust Collection takes its cues from raw industrial character, celebrating clarity, strength and honest material expression.

These inspirations are not simply visual references. They are the foundation of how we think, design and create. Each tile carries within it the story of its origin, transforming spaces into experiences that feel both timeless and intentional.

Inspiration lives in the details of the world. We simply give it a form that endures.



Fossil

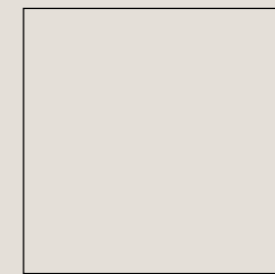


Available Sizes :

Finish: Matt



60x120cm /
24"x47" / 2'x4'

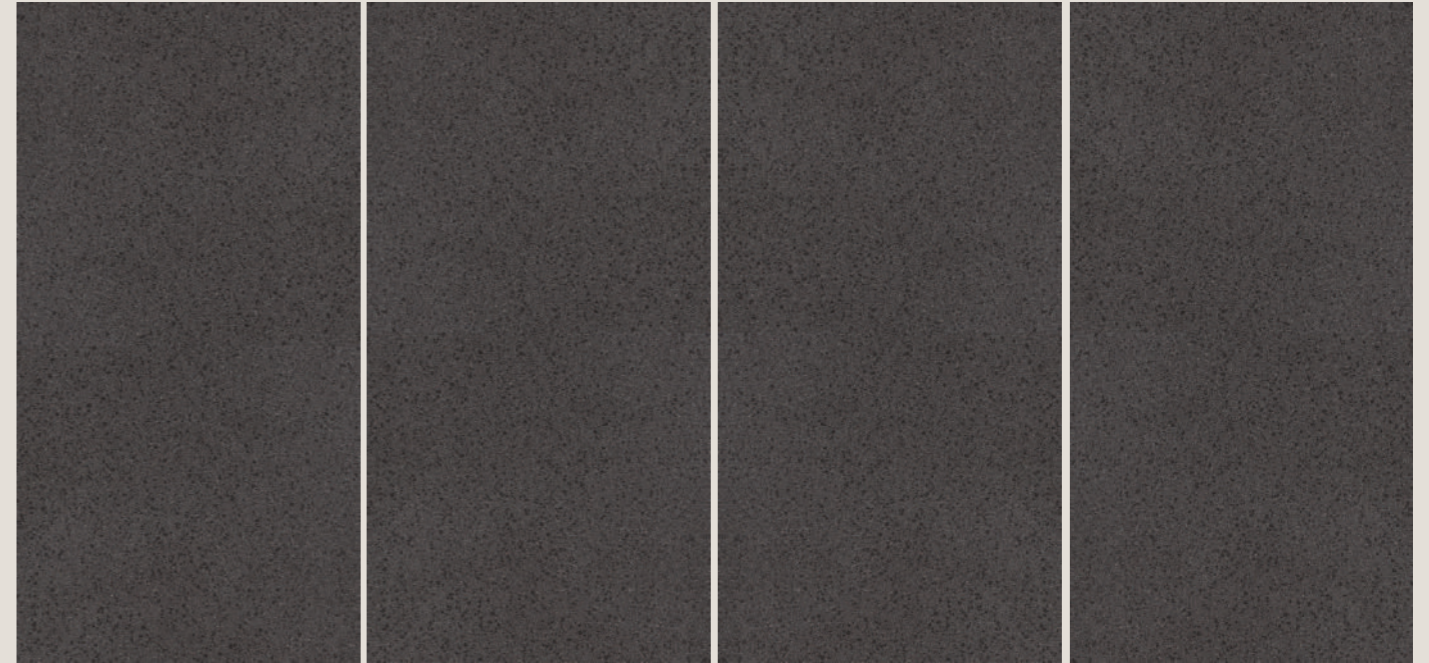


60x60cm /
24"x24" / 2'x2'

Fossil draws its character from ancient sediment textures, where fine granules and mineral flecks come together to form a naturally balanced surface. Its matt finish softens the visual depth, bringing a calm, contemporary aesthetic ideal for bathrooms and wellness interiors. The design offers subtle movement and refined detail, creating a timeless surface that blends durability with understated elegance.



Iconic



Available Sizes :

Finish: Matt



60x120cm /
24"x47" / 2'x4'

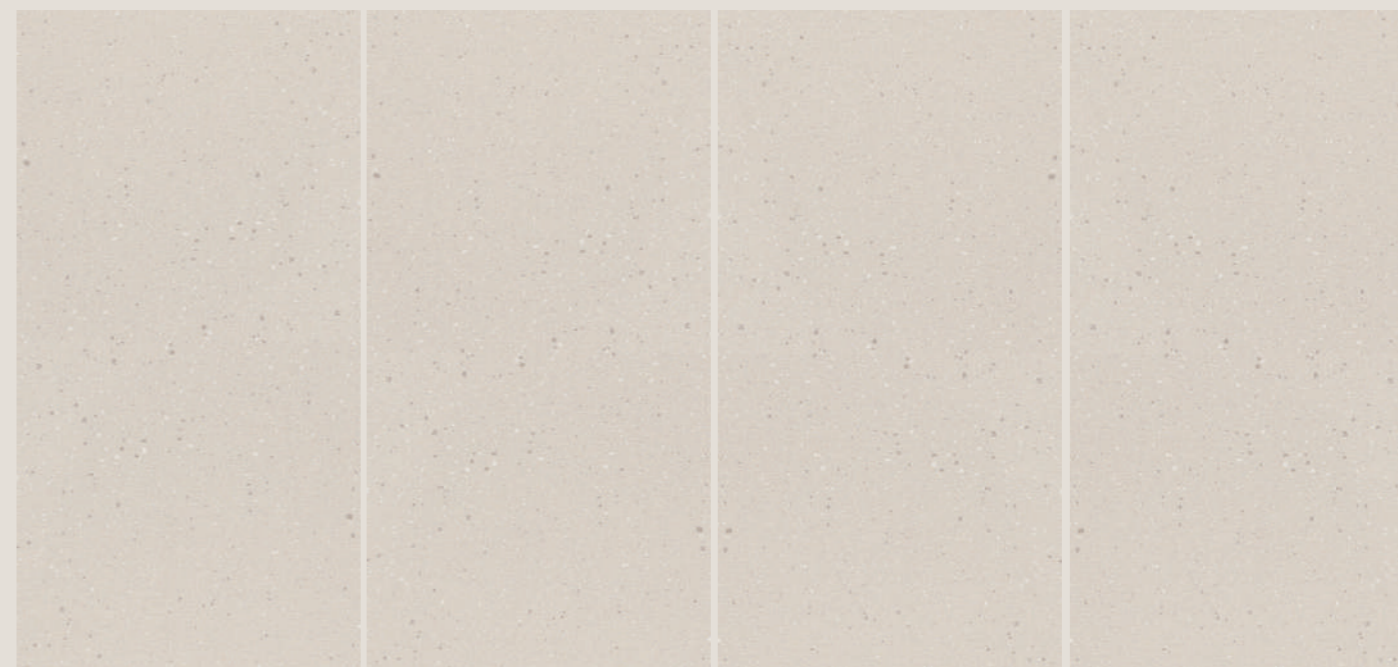


60x60cm /
24"x24" / 2'x2'

The Iconic design draws from the quiet strength of mineral-rich stone, featuring fine speckles that create a refined sense of depth. Its matt finish softens light and enhances texture, making it ideal for contemporary cafés, lounges and public interiors. This surface brings a calm, grounded character to any space, offering a modern expression of balance, warmth and visual continuity.



Mist



Available Sizes :

Finish: Matt



60x120cm /
24"x47" / 2'x4'



60x60cm /
24"x24" / 2'x2'

The Mist design is inspired by the quiet diffusion of natural light, with fine speckles dispersed across a soft, neutral base that create a gentle sense of movement. Its matt finish brings clarity and calm, making it ideal for contemporary workspaces and serene interiors. This surface balances subtle texture with refined simplicity, offering a timeless expression of comfort, openness and understated elegance.



Pebbles



Available Sizes :

Finish: Matt



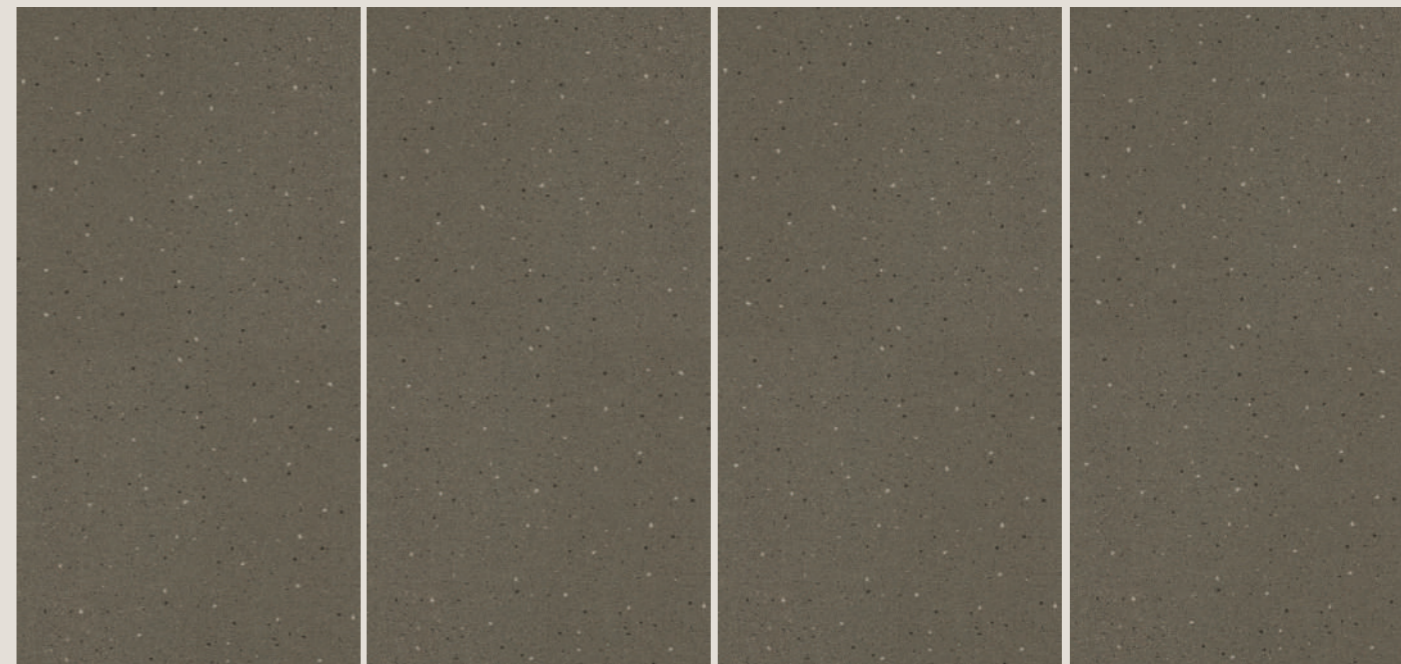
60x120cm /
24"x47" / 2'x4'



60x60cm /
24"x24" / 2'x2'

The Pebbles design reflects the subtle textures found in natural stone, with fine grains dispersed across a warm and balanced surface that recalls softly weathered landscapes. Its matt finish maintains clarity while adding gentle depth, making it well-suited for calm interior environments that require quiet visual consistency. This surface interacts smoothly with ambient light to create a composed, timeless presence that embodies natural refinement and enduring serenity.

Metallic Grey



Available Sizes :

Finish: Matt



60x120cm /
24"x47" / 2'x4'



60x60cm /
24"x24" / 2'x2'

Metallic Grey introduces a refined industrial tone shaped by fine mineral speckling across a balanced grey base. The surface carries a subtle depth that complements contemporary interiors while maintaining visual restraint. Its matt finish softens reflections and supports a calm, composed atmosphere suited for private spaces. Designed to blend strength with understated elegance, Metallic Grey delivers a surface that feels modern, grounded, and quietly sophisticated.



Casablanca



Available Sizes :

Finish: Matt



60x120cm /
24"x47" / 2'x4'



60x60cm /
24"x24" / 2'x2'

Casablanca reveals a warm neutral surface enriched with delicate mineral speckling that gently animates the composition. The balanced beige base introduces quiet character while maintaining visual harmony across expansive layouts. Its matt finish softens light and preserves spatial calm, making it well suited for hospitality and social interiors. Designed for composed architectural environments, Casablanca delivers a surface that feels welcoming, balanced, and quietly refined.

XL Chips Collection



Formats:



60x120cm

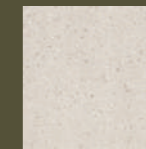


60x60cm

Designs:



Luna XL



Mist XL



Ashgrey XL



Iconic XL

USP:

Heavy Duty
Industrial Flooring
Strength Unmatched BS > 6000
Anti Skid Properties R > = 10

Full Body Color
Through Body Design
Unique Restile Matt
Superior Quality

Every surface begins with an idea. For Restile, that idea comes from the world around us. It comes from the quiet strength of natural elements and the bold precision of architectural structures. The earth gives us the textures, tones and layers that define the essence of our materials. Architecture gives us the forms, proportions and rhythms that shape how spaces are experienced.

Our collections are born from this balance between nature and structure. The Step Collection draws inspiration from movement, transitions and spatial flow. The Indust Collection takes its cues from raw industrial character, celebrating clarity, strength and honest material expression.

These inspirations are not simply visual references. They are the foundation of how we think, design and create. Each tile carries within it the story of its origin, transforming spaces into experiences that feel both timeless and intentional.

Inspiration lives in the details of the world. We simply give it a form that endures.



Luna XL



Available Sizes :

Finish: Matt



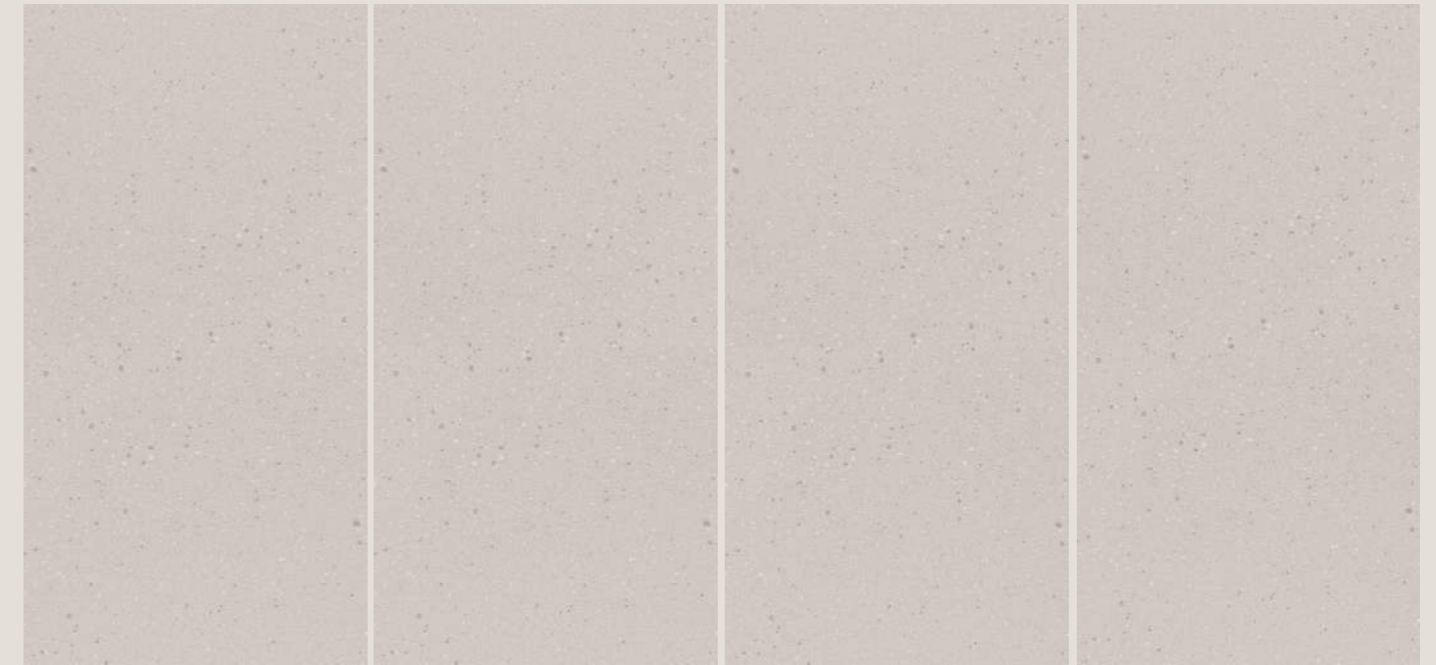
60x120cm /
24"x47" / 2'x4'



60x60cm /
24"x24" / 2'x2'

Luna XL extends a calm neutral expression across larger surfaces, allowing its soft tone to unfold with natural clarity. Fine mineral grains appear lightly scattered, adding quiet texture while preserving a smooth visual rhythm. The matt finish diffuses light gently, creating a composed and restful atmosphere suited for contemporary bathing environments. Designed to balance scale with subtle character, Luna XL offers a surface that feels serene, refined, and architecturally balanced.

Mist XL



Available Sizes :

Finish: Matt



60x120cm /
24"x47" / 2'x4'



60x60cm /
24"x24" / 2'x2'

The Mist XL design is shaped by the softness of diffused light, with fine grains settling over a calm, neutral base that echoes the quiet clarity of open interiors. Its matt finish enhances subtle depth while preserving a clean, contemporary character, making it ideal for workspaces and refined architectural settings. This surface interacts gently with light to create a sense of balance and openness, offering a timeless expression of stillness and thoughtful simplicity.



Ashgrey XL



Available Sizes :

Finish: Matt



60x120cm /
24"x47" / 2'x4'

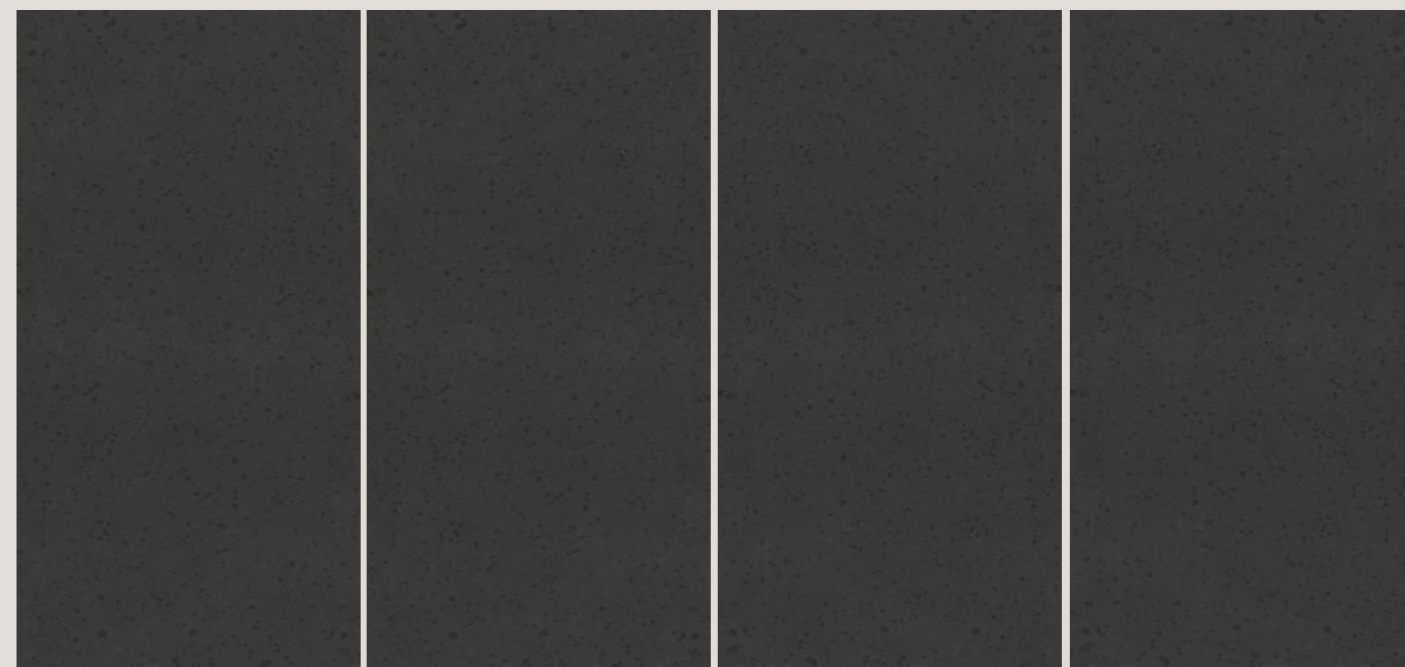


60x60cm /
24"x24" / 2'x2'

Ashgrey XL introduces a deeper tonal presence that anchors interiors with quiet confidence. Subtle speckling across the expanded surface creates a restrained visual rhythm, adding depth without overwhelming the space. The larger format supports seamless continuity, enhancing walls with a composed, uninterrupted flow. Finished in matt, the surface absorbs light softly, making it ideal for intimate environments where calm, restraint, and architectural clarity define the atmosphere.



Iconic XL



Available Sizes :

Finish: Matt



60x120cm /
24"x47" / 2'x4'



60x60cm /
24"x24" / 2'x2'

Iconic XL brings a strong visual identity through its dark mineral character and finely distributed detailing. The extended format delivers a clean, uninterrupted appearance that strengthens spatial coherence across living areas. Its even-toned finish moderates reflections, allowing furnishings and forms to stand out naturally. Designed for contemporary interiors, this surface establishes a grounded mood where balance, precision, and refined simplicity shape the overall experience.

Makers Collection



Formats:



60x120cm



60x60cm

Designs:



Flamed Elena

Flamed Abacus

Flamed Pebbles

Flamed Iconic



Flamed Sahara

Flamed Luna

USP:

Closest Feel to Rock
True Anti Skid
R > = 11

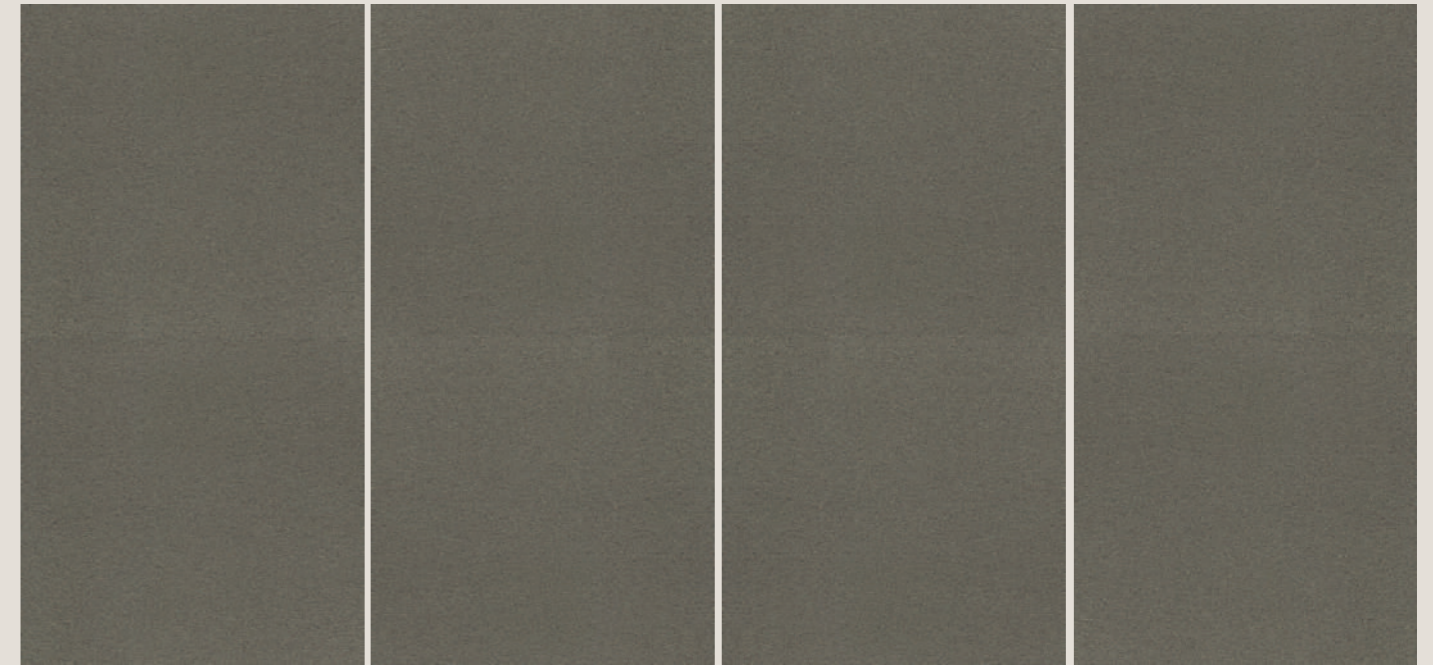
Full Body Color
Through Body Design
Unglazed / Uncoated
Easy maintenance

Every surface in the Makers Collection begins with an idea rooted in material honesty. Inspired by raw stone formations and industrial landscapes, this collection captures the quiet strength of natural rock through controlled textures, mineral depth, and grounded tones. The result is a surface that feels authentic, stable, and purpose-built.

Crafted using full body color and through body design, Makers tiles maintain visual consistency and structural integrity across every format. The unglazed, uncoated surface enhances durability while preserving the natural character of the material, ensuring long-lasting performance even in high-traffic and high-impact spaces.

Makers is not about surface decoration, but surface responsibility. It represents a balance between nature and structure, texture and restraint, performance and design. Built for architects who seek materials that endure, Makers becomes a foundation upon which strong, honest spaces are formed.

Flamed Elena



Available Sizes :

Finish: Matt



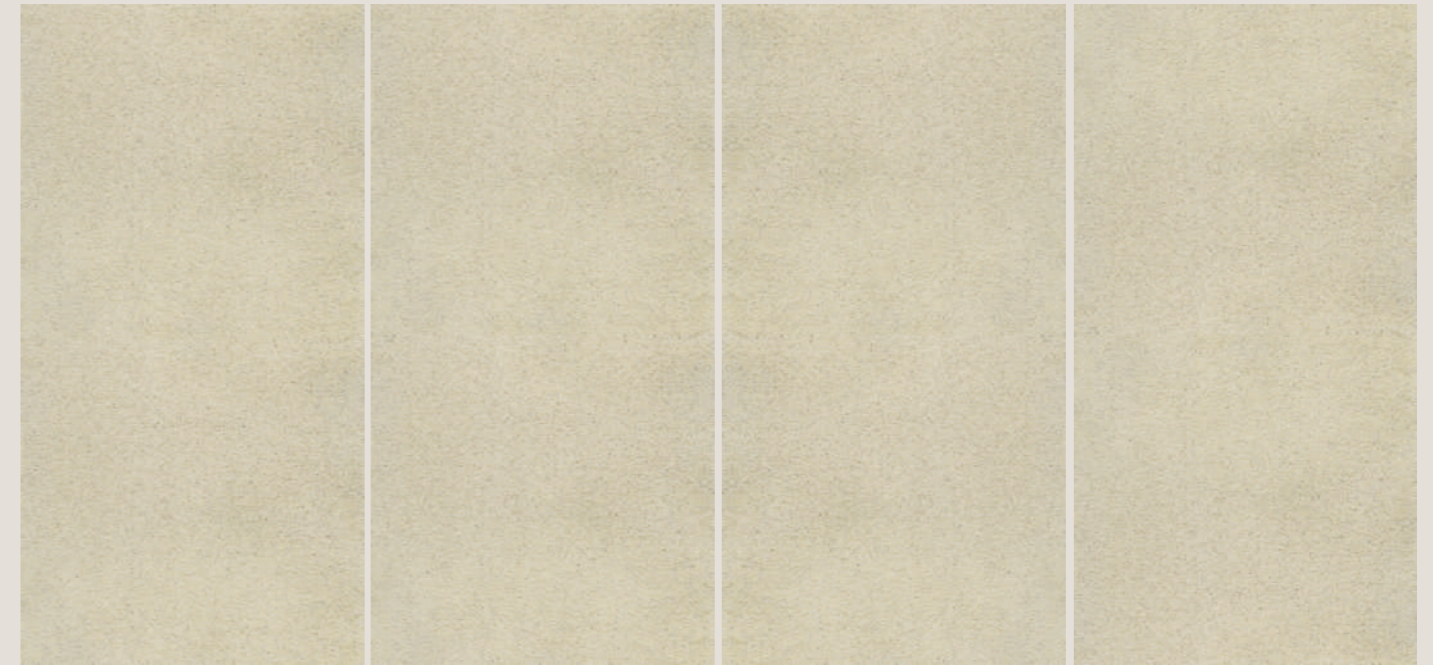
60x120cm /
24"x47" / 2'x4'



60x60cm /
24"x24" / 2'x2'

Flamed Elena expresses a tactile character shaped through controlled surface treatment and subtle tonal variation. The flamed texture introduces a gentle ruggedness that enhances grip while maintaining visual restraint. Its muted palette supports calm, functional settings where safety and refinement must coexist. Designed for wet environments, this surface delivers a composed presence that feels stable, purposeful, and quietly enduring within contemporary bathrooms.

Flamed Abacus

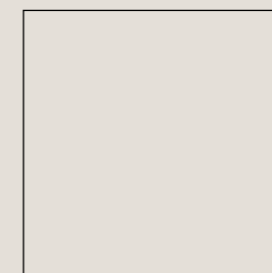


Available Sizes :

Finish: Matt



60x120cm /
24"x47" / 2'x4'

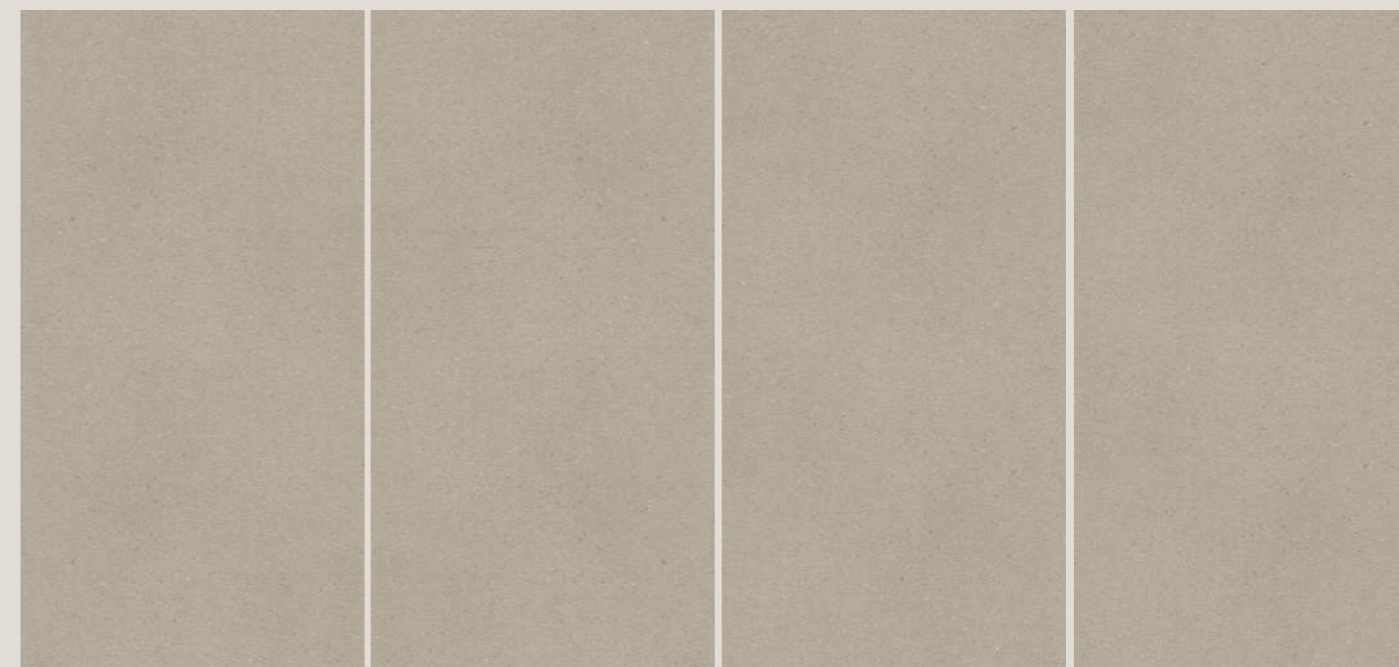


60x60cm /
24"x24" / 2'x2'

Flamed Abacus presents a softly textured surface shaped by refined heat treatment and balanced grain distribution. The flamed finish creates a controlled tactility that enhances assurance underfoot while preserving a serene visual language. Its light, mineral-inspired tone supports wellness-driven interiors where comfort and clarity are essential. Thoughtfully composed for shared spaces, this surface offers a calm, grounded expression that feels composed, inviting, and quietly resilient.

Application: Swimming Pool

Flamed Pebbles



Available Sizes :

Finish: Matt



60x120cm /
24"x47" / 2'x4'

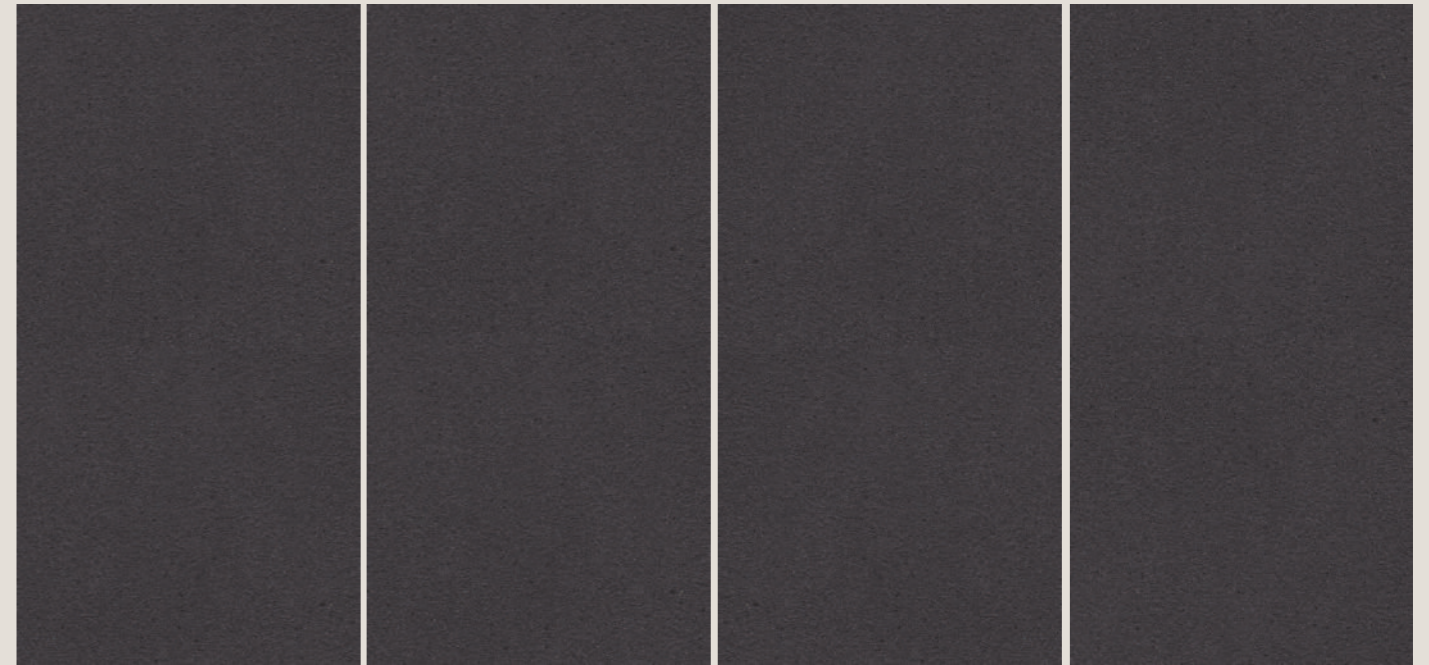


60x60cm /
24"x24" / 2'x2'

The Flamed Pebbles design draws its character from weathered riverstone, with fine tonal grains set over a calm, muted base that reflects the quiet softness of natural sediment. Its matt finish enriches the surface with gentle depth while retaining a warm modern simplicity, making it ideal for both open and intimate environments. This surface interacts subtly with light, offering a composed visual texture that brings a timeless sense of balance and harmony.



Flamed Iconic



Available Sizes :

Finish: Matt



60x120cm /
24"x47" / 2'x4'

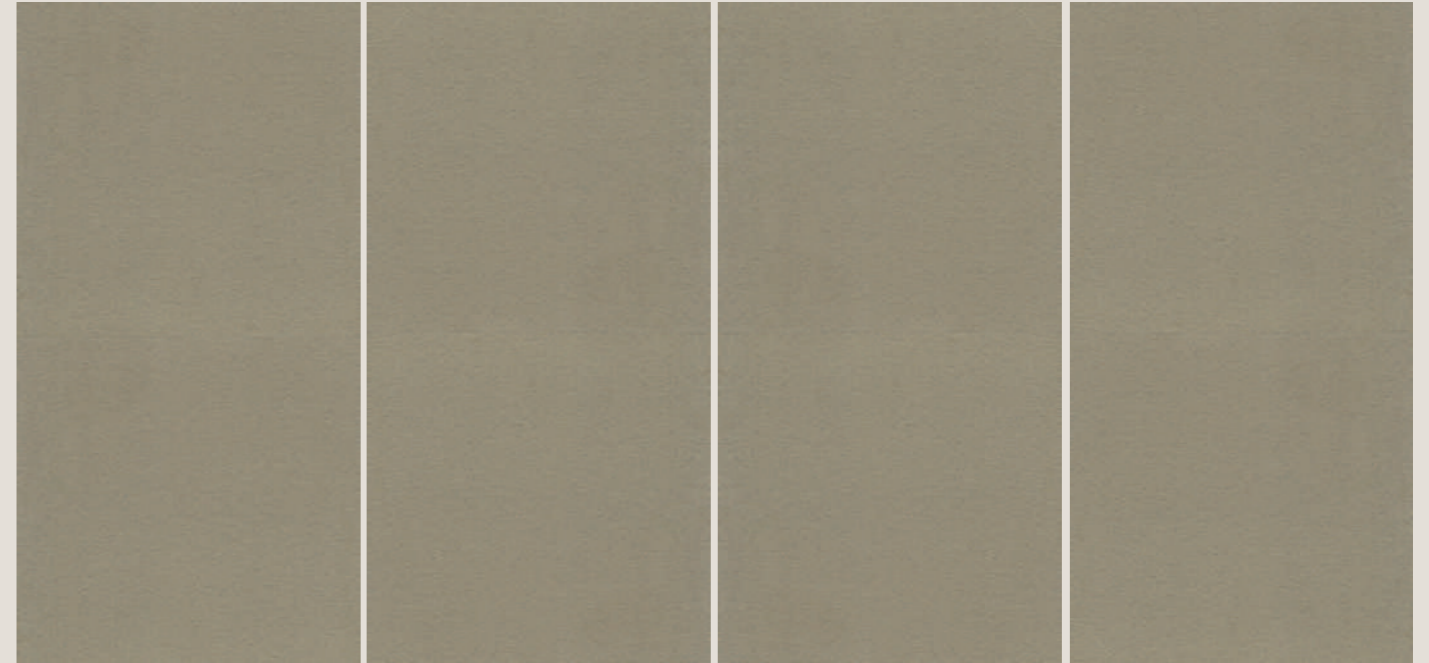


60x60cm /
24"x24" / 2'x2'

The Flamed Iconic design reflects the richness of mineral stone, with fine speckles across a deep, smoky base that reveal the quiet drama of natural formation. Its matt finish adds depth while preserving a contemporary character, making it well suited for expansive architectural spaces. This surface responds gently to light and shadow, offering a grounded sense of balance and enduring visual calm.



Flamed Sahara

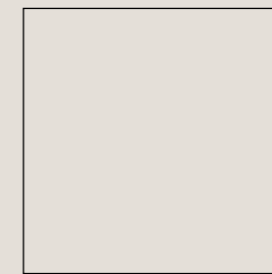


Available Sizes :

Finish: Matt



60x120cm /
24"x47" / 2'x4'



60x60cm /
24"x24" / 2'x2'

Flamed Sahara carries a desert-inspired character shaped through intensified surface firing and controlled textural depth. The flamed treatment introduces a firm, grained feel that supports high-load movement while maintaining visual restraint. Its muted sandy hue anchors transitional zones with a composed, architectural presence. Designed for vehicular and semi-outdoor settings, this surface conveys resilience, stability, and a quietly powerful identity that holds its character over time.

Flamed Luna

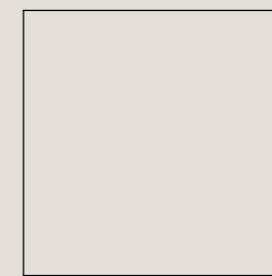


Available Sizes :

Finish: Matt



60x120cm /
24"x47" / 2'x4'



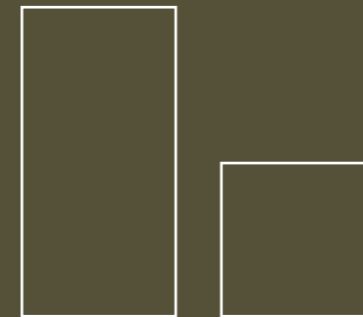
60x60cm /
24"x24" / 2'x2'

Flamed Luna reveals a soft mineral character shaped through controlled flamed treatment and delicate grain distribution. Its pale, neutral tone introduces quiet brightness while the textured finish strengthens grip and durability for exterior settings. Designed for terraces, walkways, and transitional spaces, it maintains stability without disrupting visual calm. The surface responds subtly to shifting daylight, creating a composed atmosphere that feels natural, balanced, and enduring.

Granamite Collection



Formats:



60x120cm

60x60cm

USP:

- Full Body Color
- Through Body Design
- Metal Punch Production
- Unique Restile Matt
- Superior Quality
- Unglazed / Uncoated
- Inbuilt Anti Skid Properties
- R > = 10

Designs:



Granamite is shaped by the idea of permanence. Inspired by naturally compacted stone and mineral-rich ground layers, the collection reflects surfaces that feel stable, grounded, and inherently architectural. Its visual language is quiet, relying on texture and tone rather than contrast or ornamentation.

The identity of Granamite lies in its granular clarity. Fine aggregates are distributed with precision, creating surfaces that appear uniform at scale while revealing subtle depth up close. This balance allows large installations to feel cohesive without visual monotony.

Designed for spaces that demand endurance, Granamite adapts seamlessly to large-format installations and heavy footfall zones. Its surface maintains traction, resists abrasion, and ages gracefully, making it ideal for airports, transit corridors, institutional buildings, and commercial interiors.

Granamite is designed for architecture that demands endurance. Built to perform across expansive public spaces, the collection prioritizes material honesty, surface stability, and long-term functionality. It is a surface defined by restraint, strength, and architectural purpose.



Cold Storage



Defined Paths. Balanced Spaces.

Each design carries subtle depth through controlled grains and mineral variation. These surfaces are created for large spaces where continuity, flow and visual balance are essential.

Floor: Luna | Champagne
60x60cm / 24"x24" / 2'x2' | 60x120cm / 24"x47" / 2'x4'
Finish: Matt



Clarity Through Contrast

Abacus and Elena define clear pathways with balanced contrast, bringing order and visual flow to expansive interiors.

Floor: Abacus | Elena
60x120cm / 24"x47" / 2'x4'
Finish: Matt



Abacus



Available Sizes :

Finish: Matt



60x120cm /
24"x47" / 2'x4'

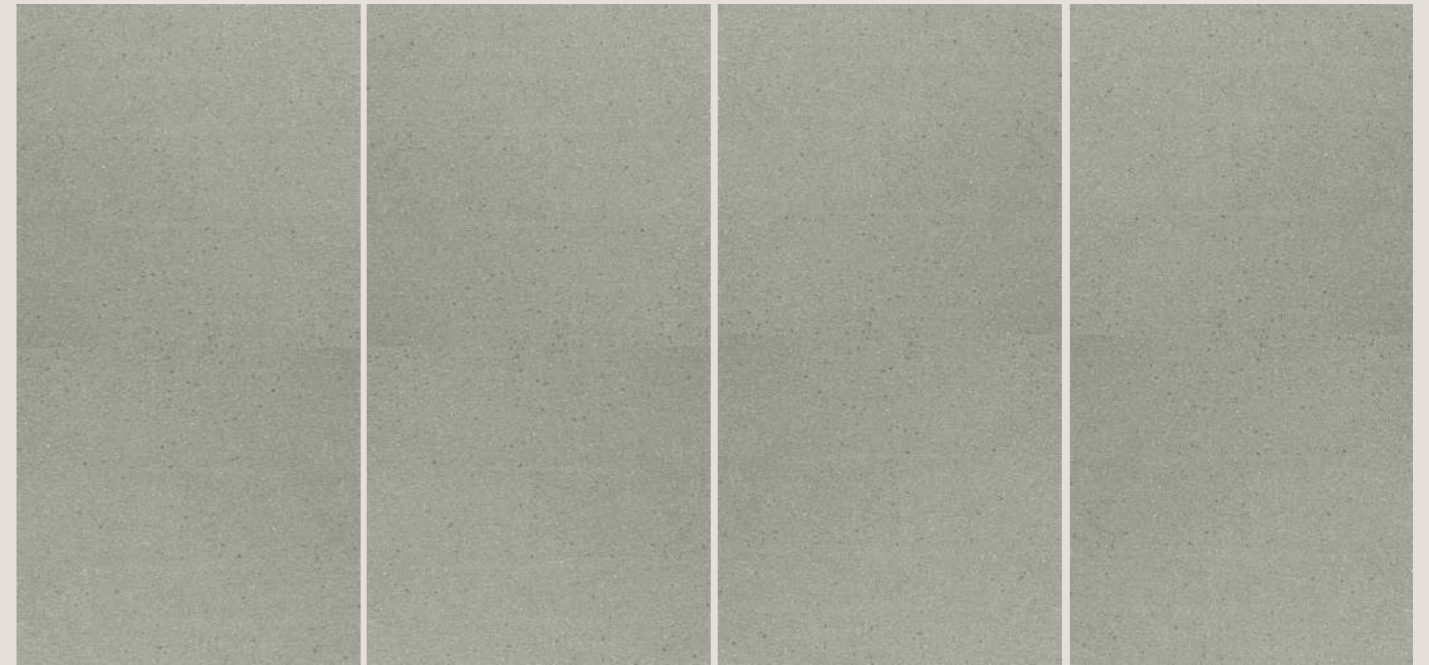


60x60cm /
24"x24" / 2'x2'

The Abacus design is shaped by the softness of natural sediments, with fine speckles resting over a light, neutral base that creates a sense of quiet order. Its matt finish preserves gentle texture while supporting a clean and hygienic visual tone, making it ideal for calm, functional spaces. This surface responds to light with subtle movement, offering refined simplicity and a timeless expression of comfort and clarity.



Aqua

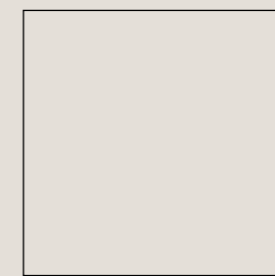


Available Sizes :

Finish: Matt



60x120cm /
24"x47" / 2'x4'

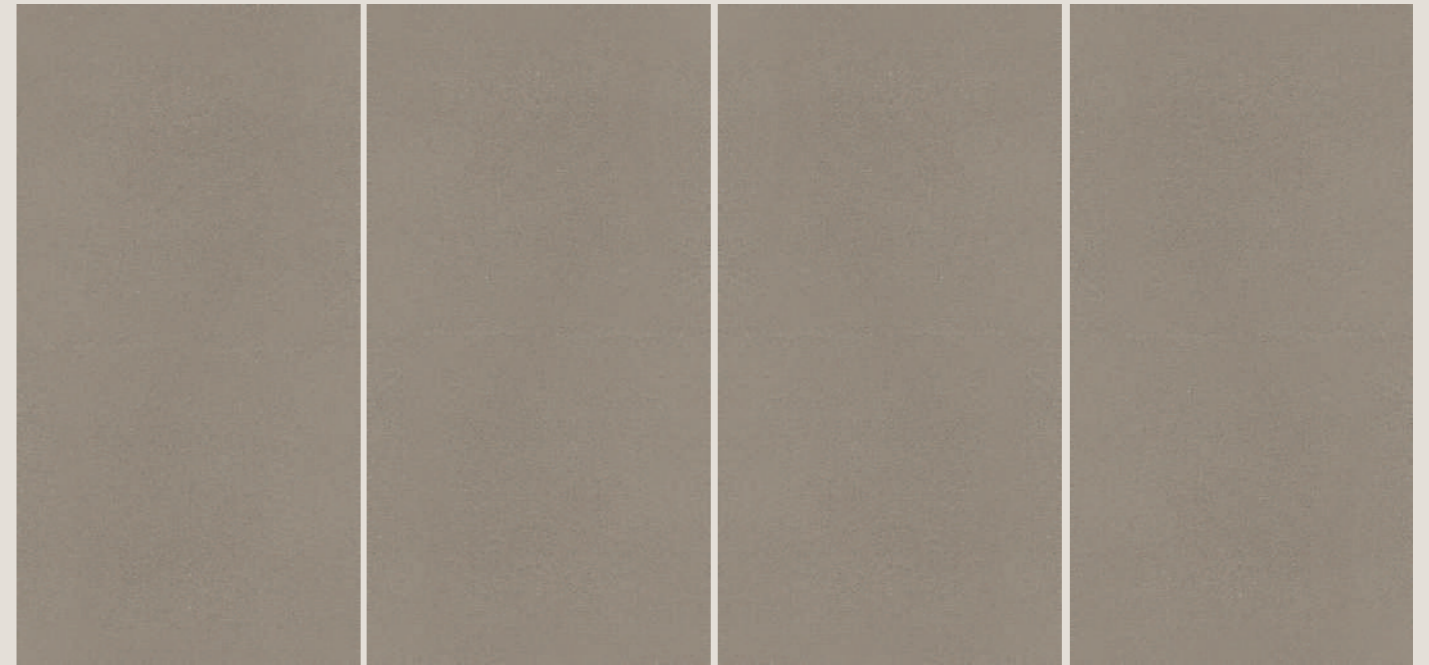


60x60cm /
24"x24" / 2'x2'

The Aqua design is inspired by the calm clarity of water, with fine speckles resting over a soft pastel base that brings a sense of freshness and ease. Its matt finish maintains a gentle texture while supporting clean, uplifting interiors, making it ideal for wellness-focused or high-traffic environments. This surface responds to light with quiet movement, offering a timeless expression of purity, balance and modern serenity.



Champagne



Available Sizes :

Finish: Matt



60x120cm /
24"x47" / 2'x4'

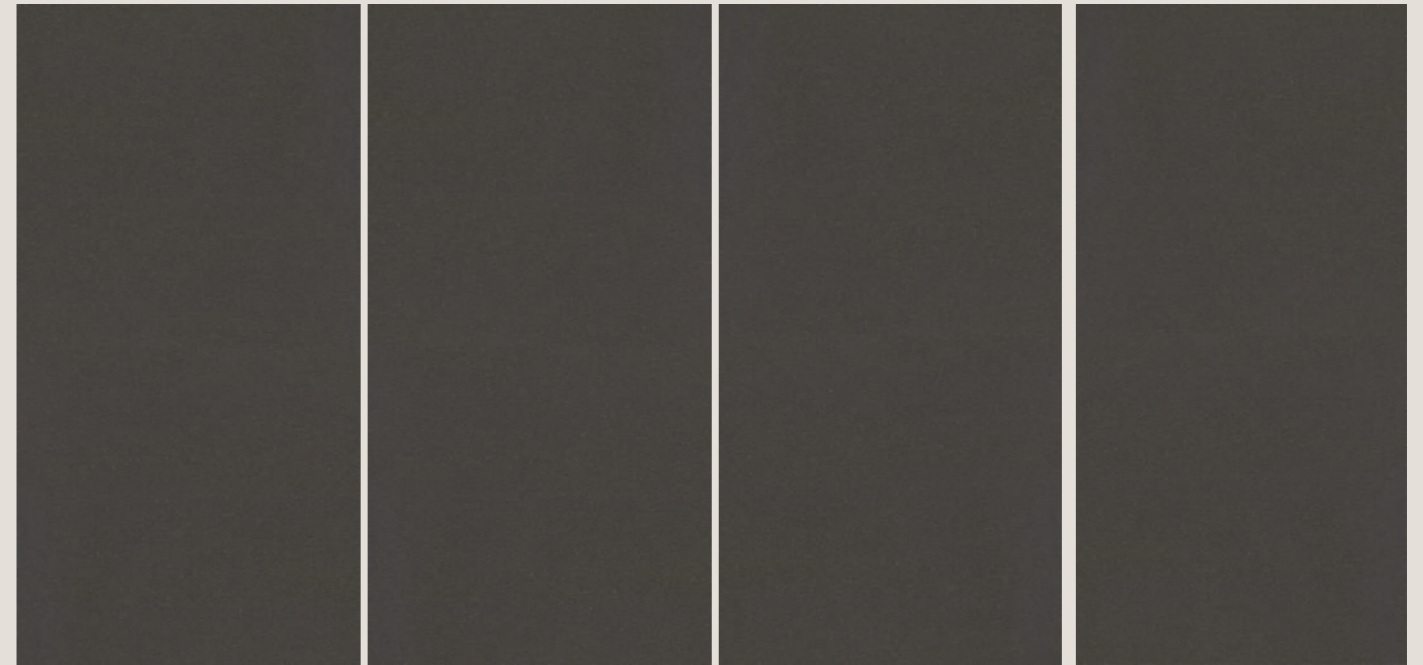


60x60cm /
24"x24" / 2'x2'

The Champagne design reflects the warmth of natural earth tones, with fine speckles settled over a soft, muted base that creates a sense of understated richness. Its matt finish elevates the surface with gentle depth while preserving a refined, contemporary feel, making it ideal for calm residential or elegant commercial settings. This surface interacts with light in subtle shifts, offering a timeless expression of warmth, balance and grounded sophistication.



Cosmic



Available Sizes :

Finish: Matt



60x120cm /
24"x47" / 2'x4'

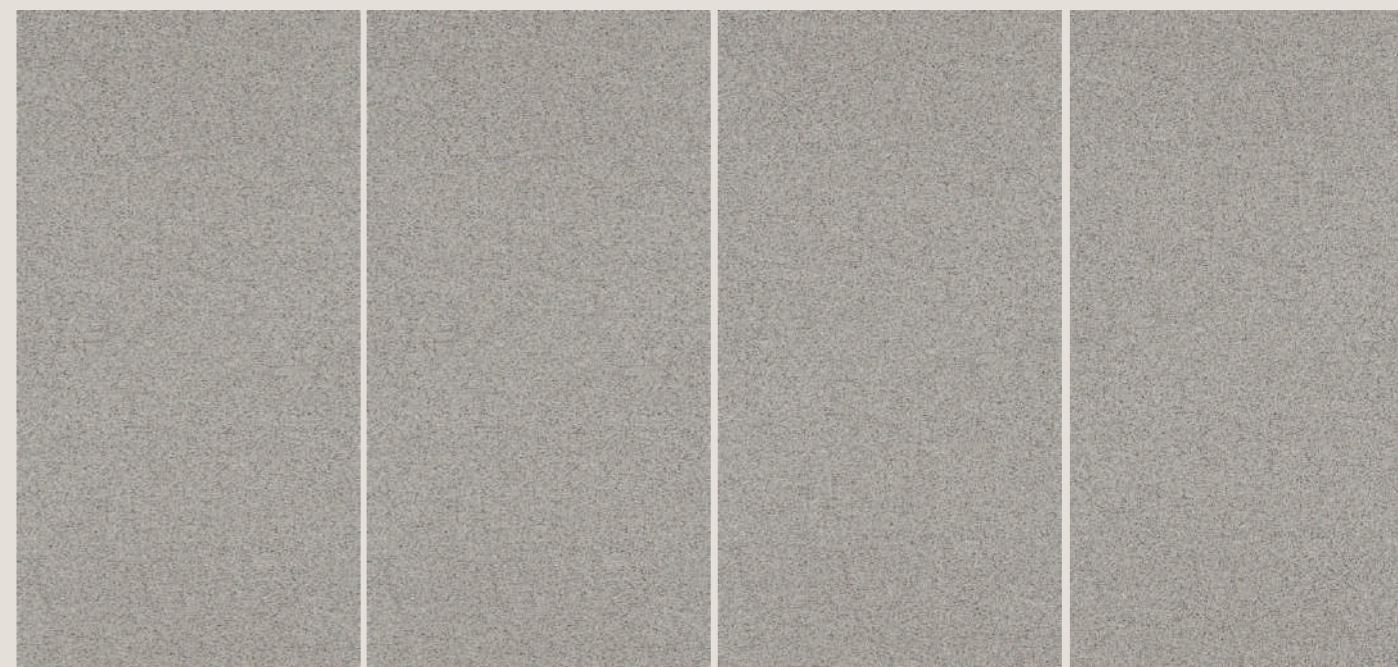


60x60cm /
24"x24" / 2'x2'

The Cosmic design takes inspiration from the vastness of the universe, with subtle speckles over a deep, muted base that evoke the quiet shimmer of distant stars. Its matt finish enhances depth while maintaining refined modernity, making it ideal for expansive public spaces. This surface captures movement and light with understated elegance, offering a timeless expression of structure and serenity.



Elena



Available Sizes :

Finish: Polished



60x120cm /
24"x47" / 2'x4'

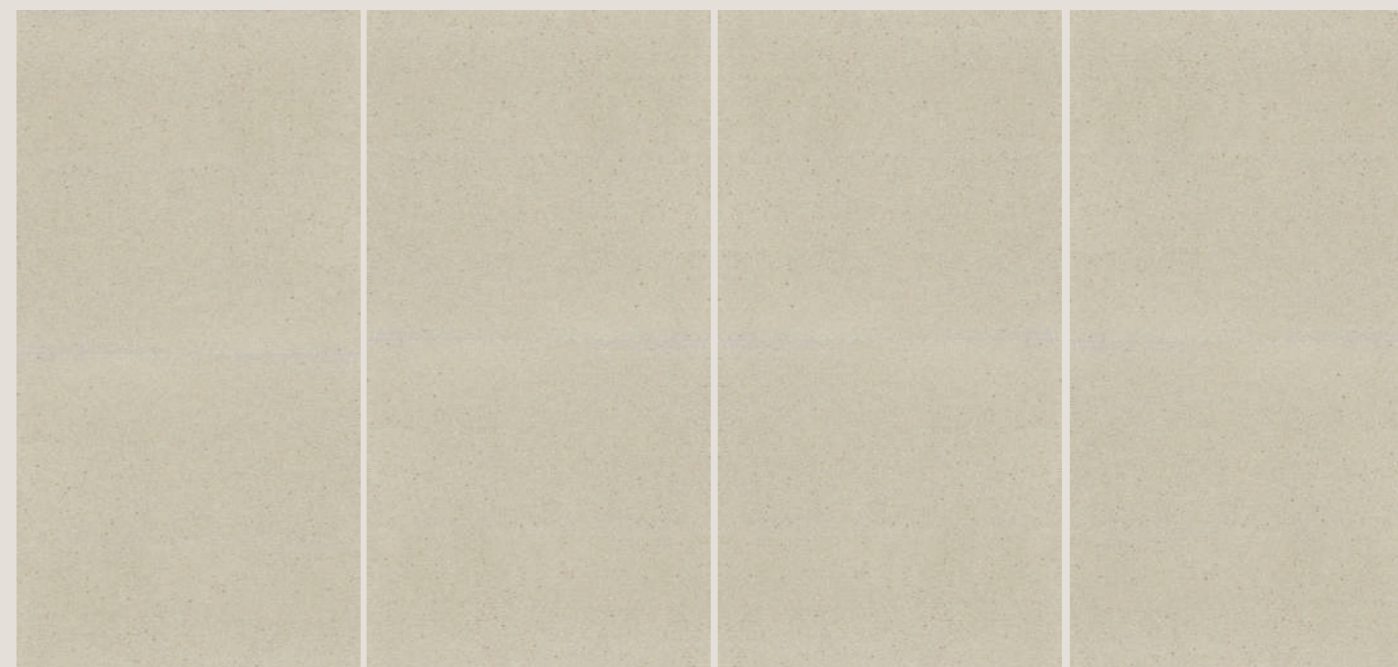


60x60cm /
24"x24" / 2'x2'

The Elena design draws inspiration from the clarity of natural stone, with fine granular patterns dispersed across a cool, balanced base that creates a sense of quiet refinement. Its polished finish adds a gentle luminosity while preserving a composed modern character, making it suitable for elevated office environments and premium interiors. This surface reflects movement and light in subtle variations, offering a timeless expression of purity, structure and serene sophistication.



Graniti



Available Sizes :

Finish: Matt



60x120cm /
24"x47" / 2'x4'



60x60cm /
24"x24" / 2'x2'

The Graniti design is inspired by the soft mineral tones found in natural sandstone, with fine granules distributed across a warm, neutral base to create a calm and grounded aesthetic. Its matt finish adds a subtle depth while preserving a clean contemporary character, making it ideal for school corridors and high-movement public environments. This surface balances light and texture with understated clarity, offering a timeless expression of durability, comfort and spatial serenity.

Luna



Available Sizes :

Finish: Polished



60x120cm /
24"x47" / 2'x4'



60x60cm /
24"x24" / 2'x2'

The Luna design draws inspiration from soft lunar dust tones, with delicate speckles resting on a pale, refined base that reflect a gentle sense of clarity. Its polished finish enhances light and surface purity while maintaining a composed modern character, making it ideal for bright transit areas such as airport lounges. This surface captures subtle radiance and movement with understated refinement, offering a timeless expression of openness, comfort and spatial harmony.



Marmo



Available Sizes :

Finish: Matt



60x120cm /
24"x47" / 2'x4'



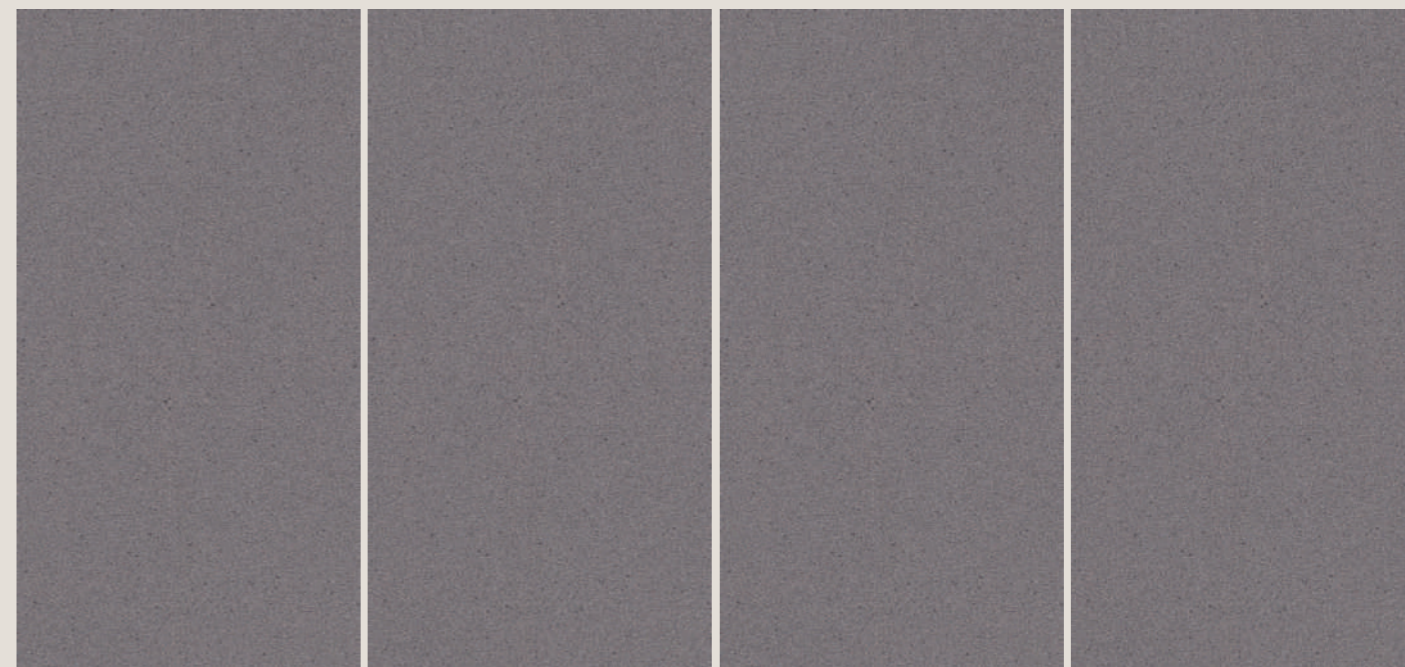
60x60cm /
24"x24" / 2'x2'

The Marmo design draws inspiration from the calm neutrality of soft stone, with fine speckles resting over a smooth, muted base that brings a quiet sense of balance. Its matt finish refines light diffusion while preserving a clean modern character, making it ideal for busy retail interiors such as supermarkets. This surface maintains visual clarity and movement with understated poise, offering a timeless expression of order, comfort and everyday functionality.

FAN



Matrix



Available Sizes :

Finish: Matt



60x120cm /
24"x47" / 2'x4'

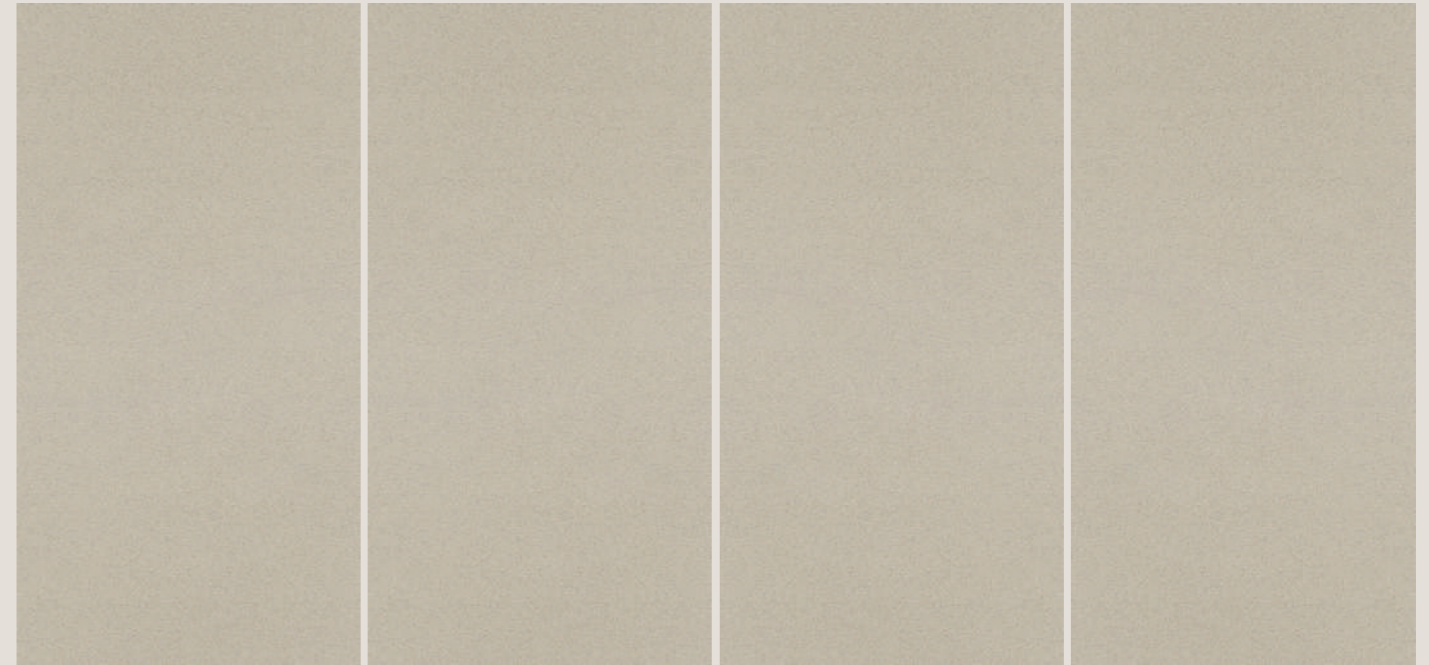


60x60cm /
24"x24" / 2'x2'

The Matrix design reflects the calm order of contemporary architecture, with fine grains arranged over a cool, uniform base. Its matt finish softens reflections and enhances surface clarity, making it suitable for high-movement public areas. The design brings controlled texture and visual balance, offering a composed, modern presence that supports structure and serenity in any setting.



Sahara



Available Sizes :

Finish: Matt



60x120cm /
24"x47" / 2'x4'

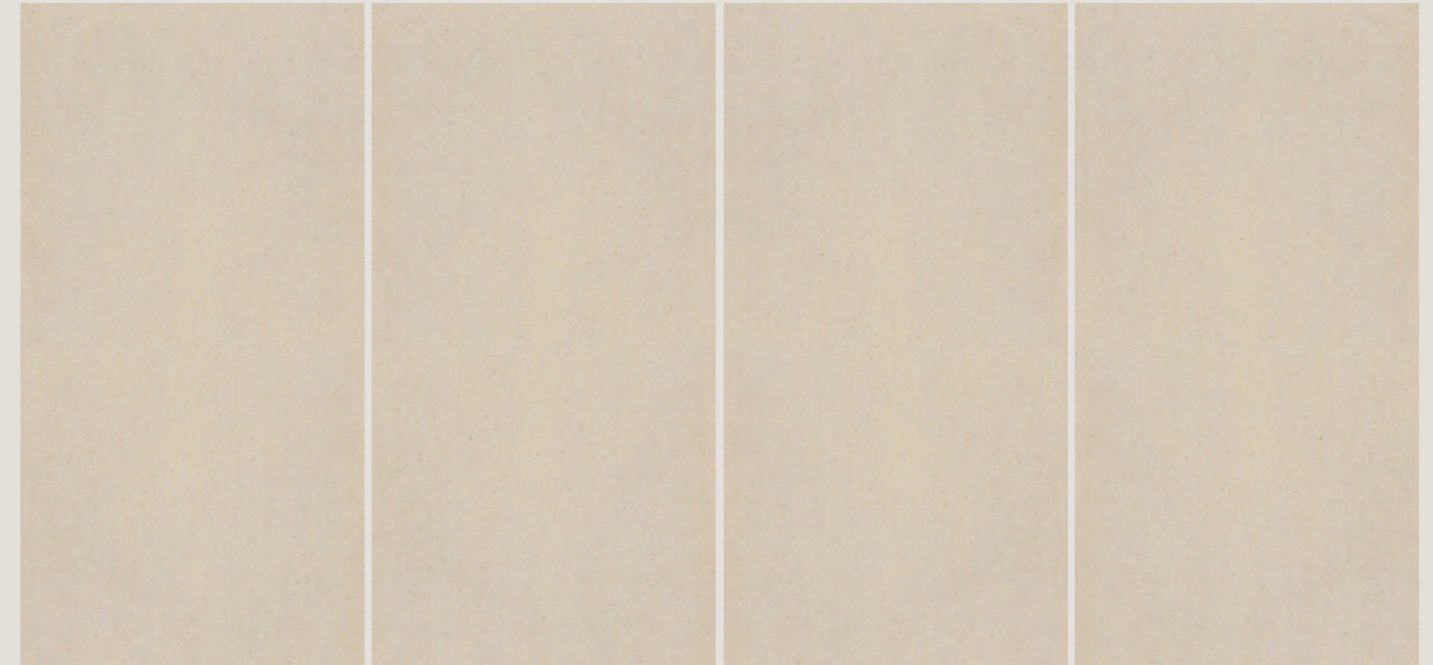


60x60cm /
24"x24" / 2'x2'

The Sahara design draws from the warmth of sun-touched landscapes, featuring soft grain variations over a gentle beige base. Its matt finish reduces glare while enhancing natural texture, making it ideal for bright, open environments. The surface offers calm tonality and steady visual rhythm, bringing a balanced character that supports structure, comfort and everyday functionality with quiet refinement.



Sienna

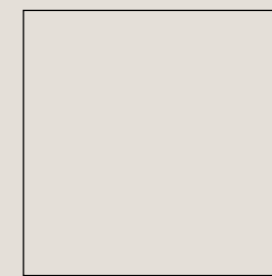


Available Sizes :

Finish: Polished



60x120cm /
24"x47" / 2'x4'

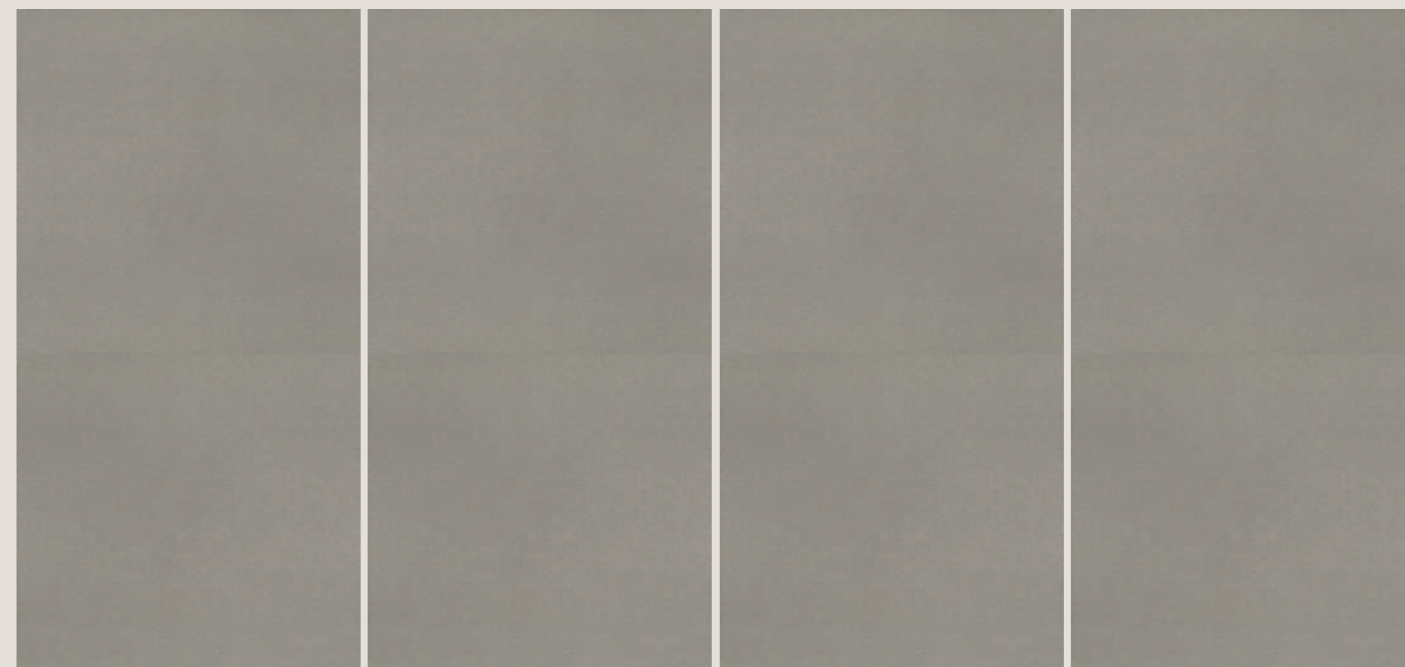


60x60cm /
24"x24" / 2'x2'

The Sienna design draws its warmth from soft earthy undertones, with fine mineral speckles gently dispersed across a smooth, refined base that brings a sense of natural calm. Its polished finish enhances brightness while retaining a subtle elegance, making it ideal for contemporary retail environments. This surface reflects light with quiet sophistication, offering a timeless expression of clarity, comfort and modern serenity.



Speckled Grey



Available Sizes :

Finish: Matt



60x120cm /
24"x47" / 2'x4'



60x60cm /
24"x24" / 2'x2'

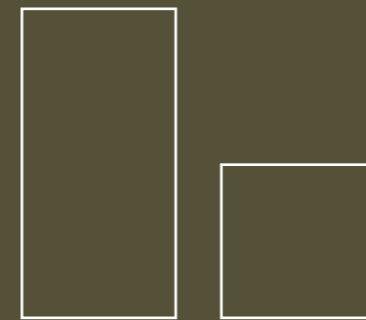
The Speckled Grey design is shaped by soft mineral tones, with delicate speckles settling across a cool, even surface that reflects a calm architectural mood. Its polished finish elevates brightness while preserving a subtle refinement, making it a strong choice for modern office lobbies and transitional spaces. This surface interacts with light in a gentle, balanced way, offering a timeless expression of clarity, depth and contemporary serenity.



Solid Collection



Formats:



60x120cm

60x60cm

Designs:



Super Polo

Polo

Beige

Steel Grey



Dark Grey

Mushroom

Kota Green

Jade



Rosetta

Trendy

Teracotta

Nero

USP:

Pastel, Earthy, Natural Colors

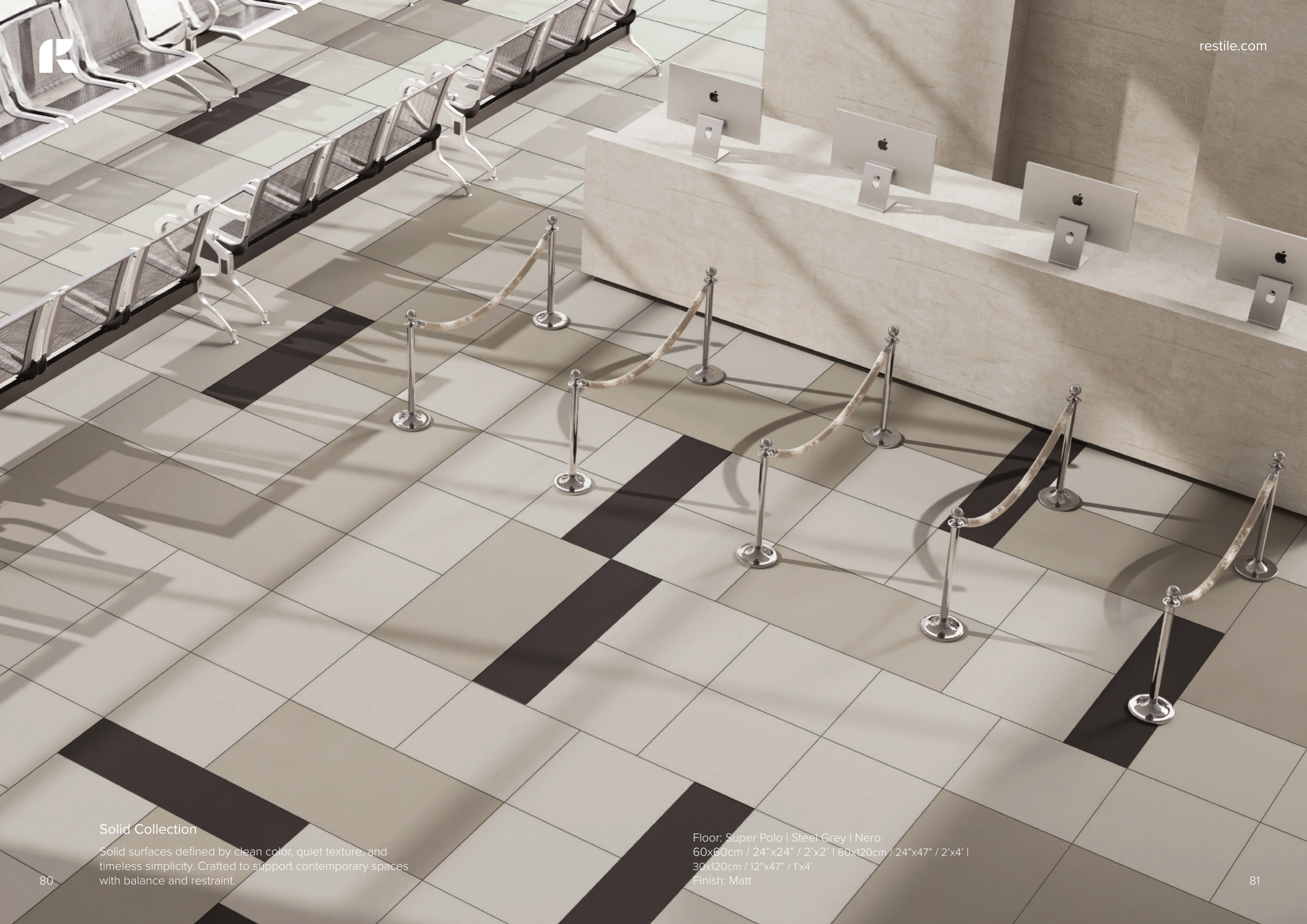
- Full Body Color
- Through Body Design
- Metal Punch Production
- Unique Restile Matt Surface
- Superior Quality
- Unglazed / Uncoated
- Inbuilt Anti Skid Properties
- R > = 10

The Solid Collection is rooted in simplicity. It focuses on pure color expression where surfaces act as a quiet foundation rather than a visual statement. Each shade is carefully calibrated to support architecture without overpowering the space.

Inspired by natural pigments and softened industrial hues, the collection brings calm, stability, and versatility. These tones transition effortlessly between residential and commercial environments, creating continuity across floors and walls.

Solid is designed for spaces that value restraint and balance. With uniform textures, muted finishes, and dependable performance, the collection allows form, light, and architecture to take the lead while the surface delivers strength, comfort, and visual harmony.

A dependable choice for designers seeking timeless color, functional strength, and visual consistency across large spaces.



Solid Collection

Solid surfaces defined by clean color, quiet texture, and timeless simplicity. Crafted to support contemporary spaces with balance and restraint.

Floor: Super Polo | Steel Grey | Nero
60x60cm / 24"x24" / 2'x2' | 60x120cm / 24"x47" / 2'x4' |
30x120cm / 12"x47" / 1'x4'
Finish: Matt

PANERAI

EMODA

PANERAI

BOVET
1822

J & S
1851 & Co.

Ω
OMEGA

PACET

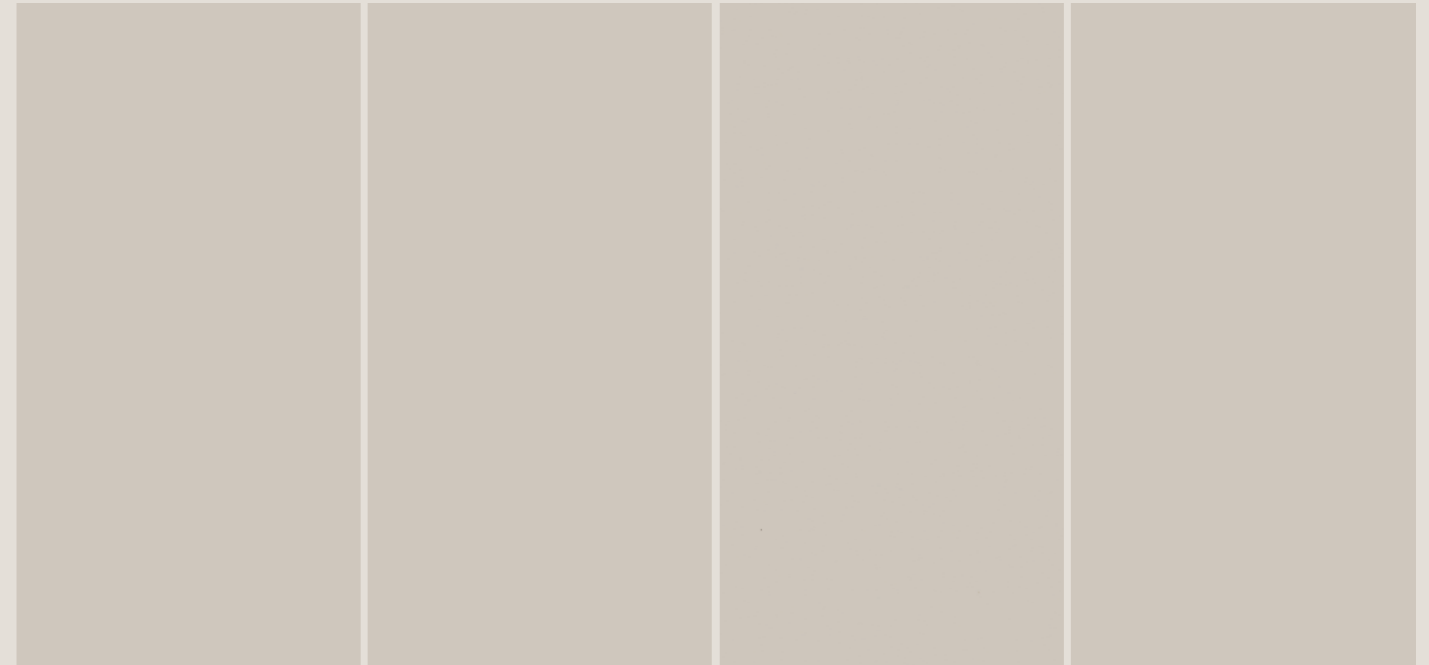
Solid Collection

Polo and Espresso combined to create defined pathways and visual balance in large interiors

Floor: Polo | Espresso
60x60cm / 24"x24" / 2'x2'
Finish: Matt



Super Polo



Available Sizes :

Finish: Matt



60x120cm /
24"x47" / 2'x4'



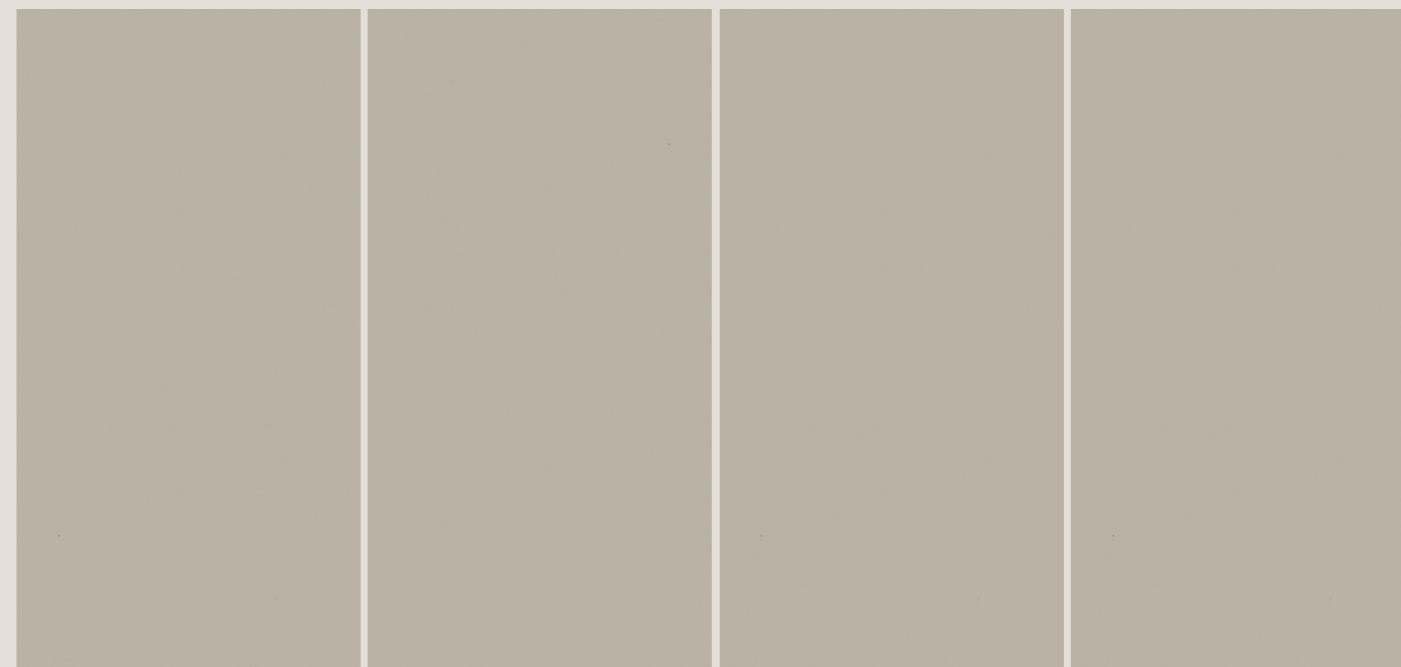
60x60cm /
24"x24" / 2'x2'

The Super Polo design brings a soft neutral tone that enhances clarity and openness within modern interiors. Its matt finish diffuses light gently and maintains a smooth, composed appearance suited for living spaces and multifunctional areas. The surface carries a subtle texture that supports visual calm, offering a balanced foundation that reinforces comfort, structure and a refined sense of everyday serenity.

Application: Kitchen



Polo



Available Sizes :

Finish: Matt



60x120cm /
24"x47" / 2'x4'

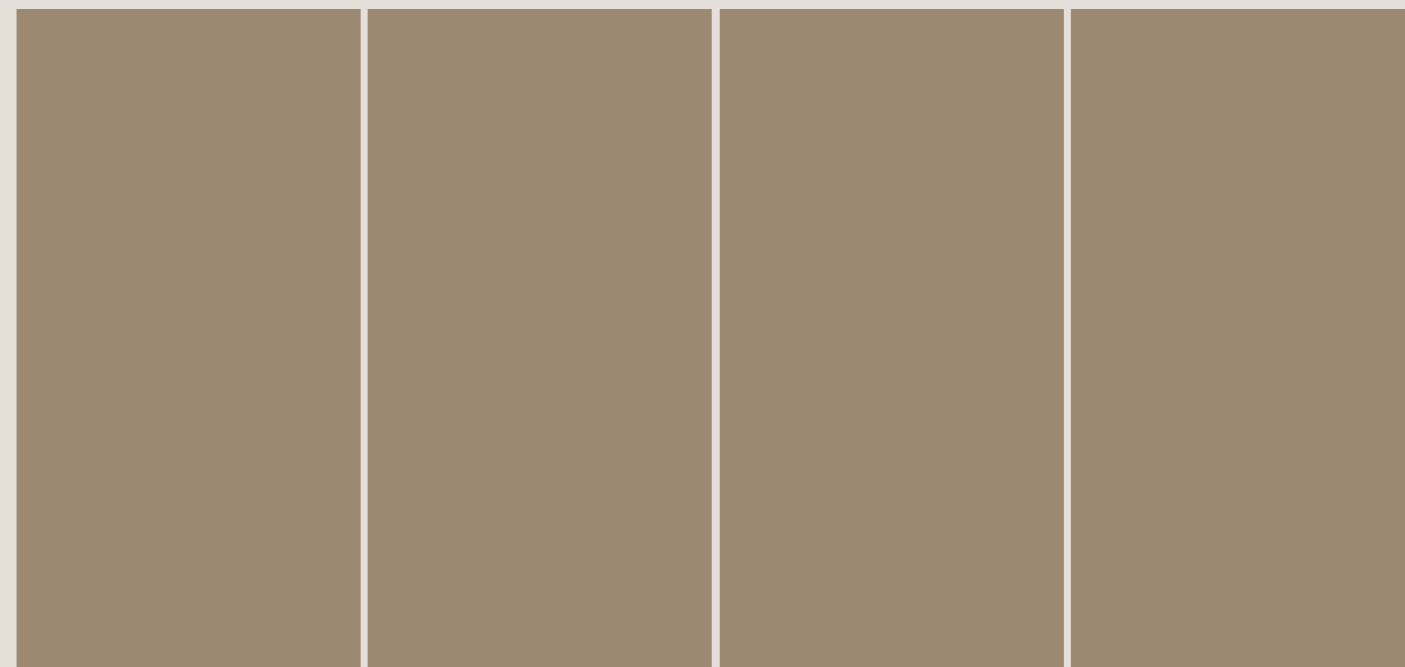


60x60cm /
24"x24" / 2'x2'

The Polo design offers a warm neutral tone that creates a gentle, welcoming presence in contemporary interiors. Its matt finish softens reflections and enhances smooth surface clarity, making it well suited for kitchens and versatile living areas. The subtle grain across the tile provides quiet visual depth, supporting a calm and balanced atmosphere that reinforces comfort, practicality and modern simplicity.



Beige



Available Sizes :

Finish: Matt



60x120cm /
24"x47" / 2'x4'

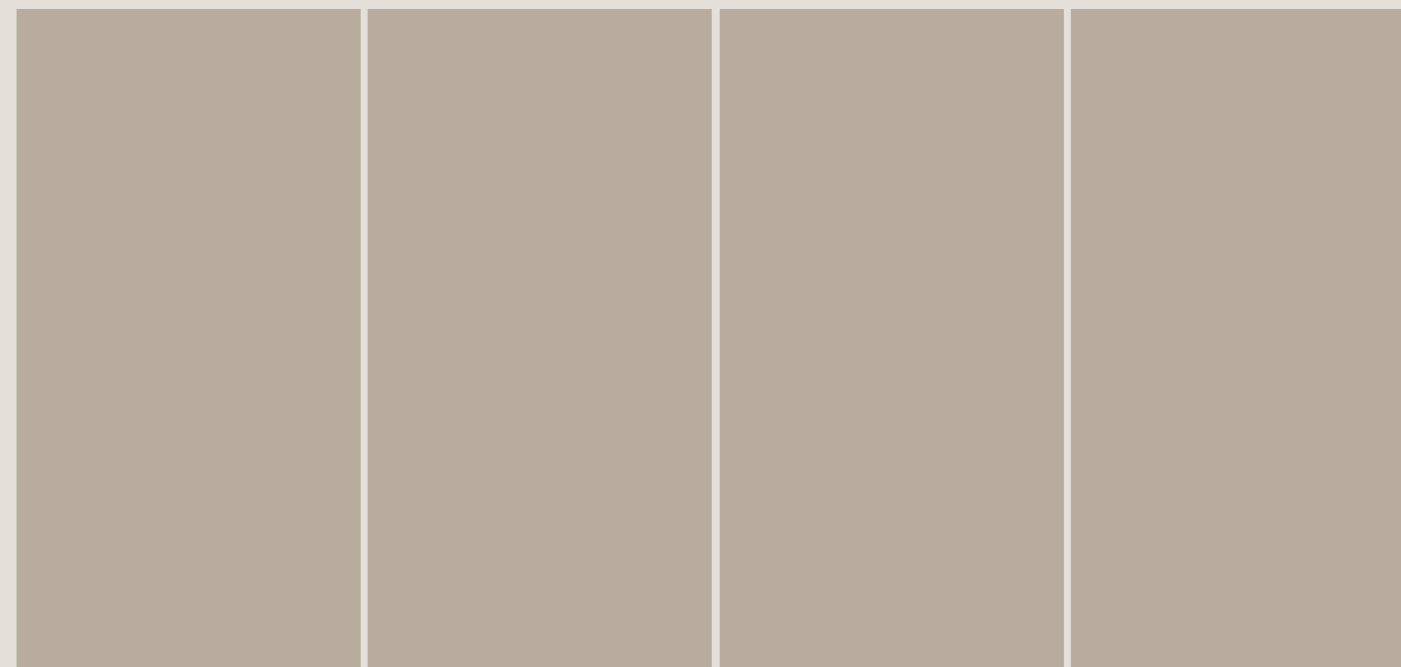


60x60cm /
24"x24" / 2'x2'

The Beige design introduces a soft earthy tone that brings warmth and ease to everyday interiors. Its matt finish reduces glare and enhances gentle surface texture, making it suitable for workspaces and light commercial settings. The subtle variation within the shade adds quiet depth while maintaining a calm visual presence, supporting spaces that value comfort, clarity and a refined simplicity.



Steel Grey



Available Sizes :

Finish: Matt



60x120cm /
24"x47" / 2'x4'

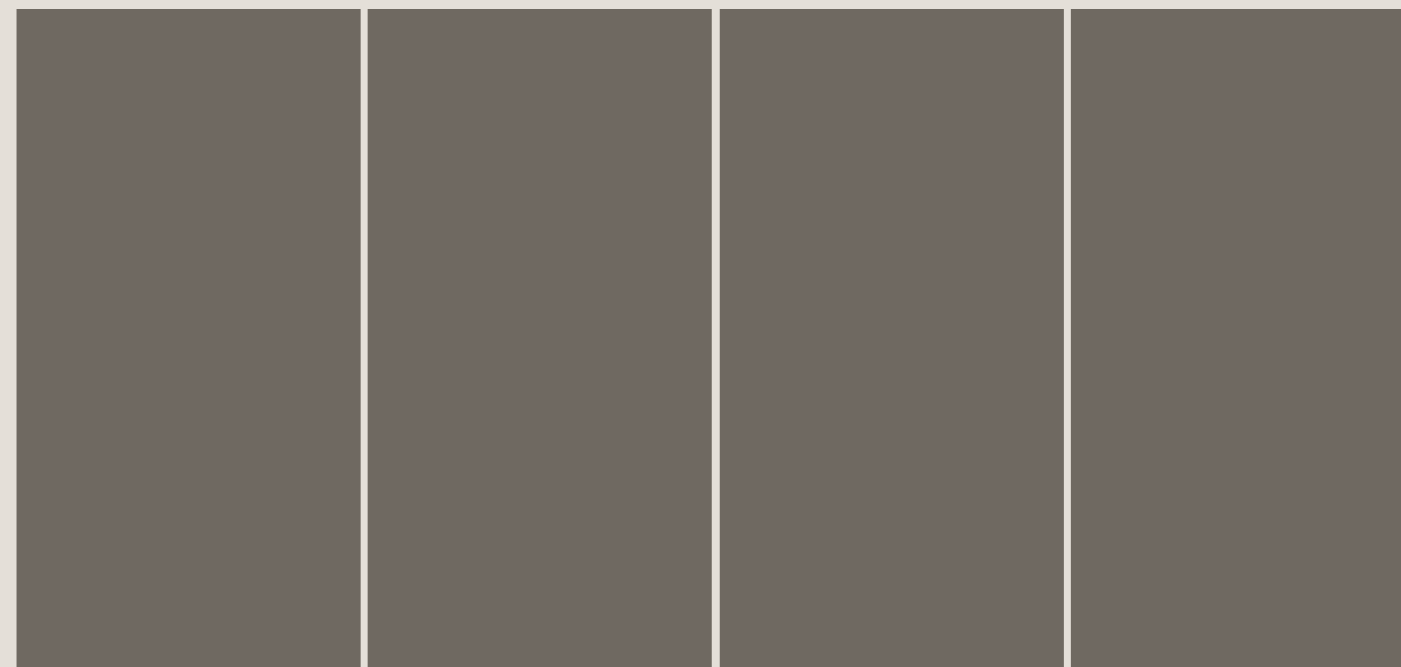


60x60cm /
24"x24" / 2'x2'

The Steel Grey design brings a cool refined tone that adds depth and stability to modern interior settings. Its matt finish softens the surface and enhances clarity, making it suited for hospitality and high-activity areas. The gentle movement within the shade offers a controlled visual texture that feels composed and contemporary, supporting interiors that require durability, balance and understated sophistication.



Dark Grey



Available Sizes :

Finish: Matt



60x120cm /
24"x47" / 2'x4'

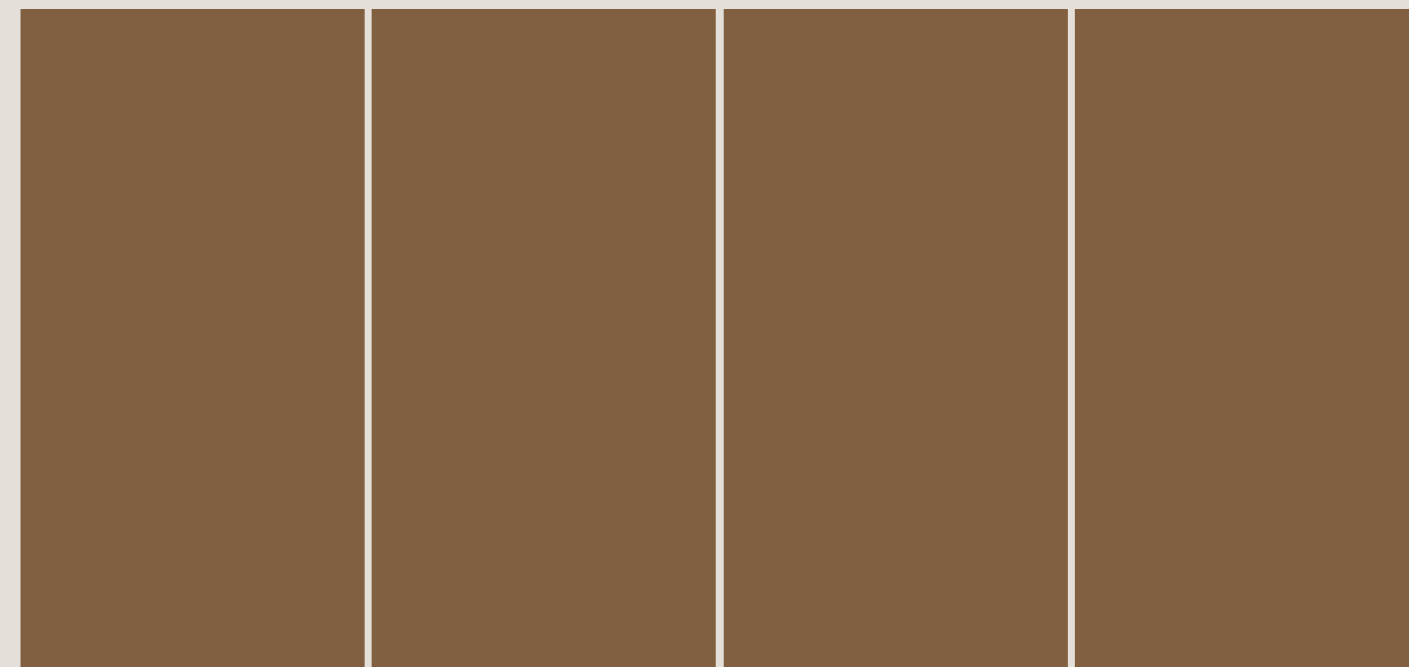


60x60cm /
24"x24" / 2'x2'

The Dark Grey design delivers a strong contemporary tone that anchors interior spaces with a sense of depth and clarity. Its matt finish reduces glare and enhances smooth texture, making it ideal for retail zones and active commercial areas. Subtle variations within the shade create a quiet movement that supports a balanced visual character, offering durability, composure and a modern architectural presence.



Mushroom



Available Sizes :

Finish: Matt



60x120cm /
24"x47" / 2'x4'



60x60cm /
24"x24" / 2'x2'

The Mushroom design brings a soft, grounded warmth that creates a calm and welcoming atmosphere. Its matt surface diffuses light gently, allowing the tone to feel rich yet understated across interior spaces. Subtle movements within the shade add quiet depth that enhances modern bathrooms and wellness zones. This surface supports a balanced, soothing aesthetic, offering durability, comfort and a refined natural presence.



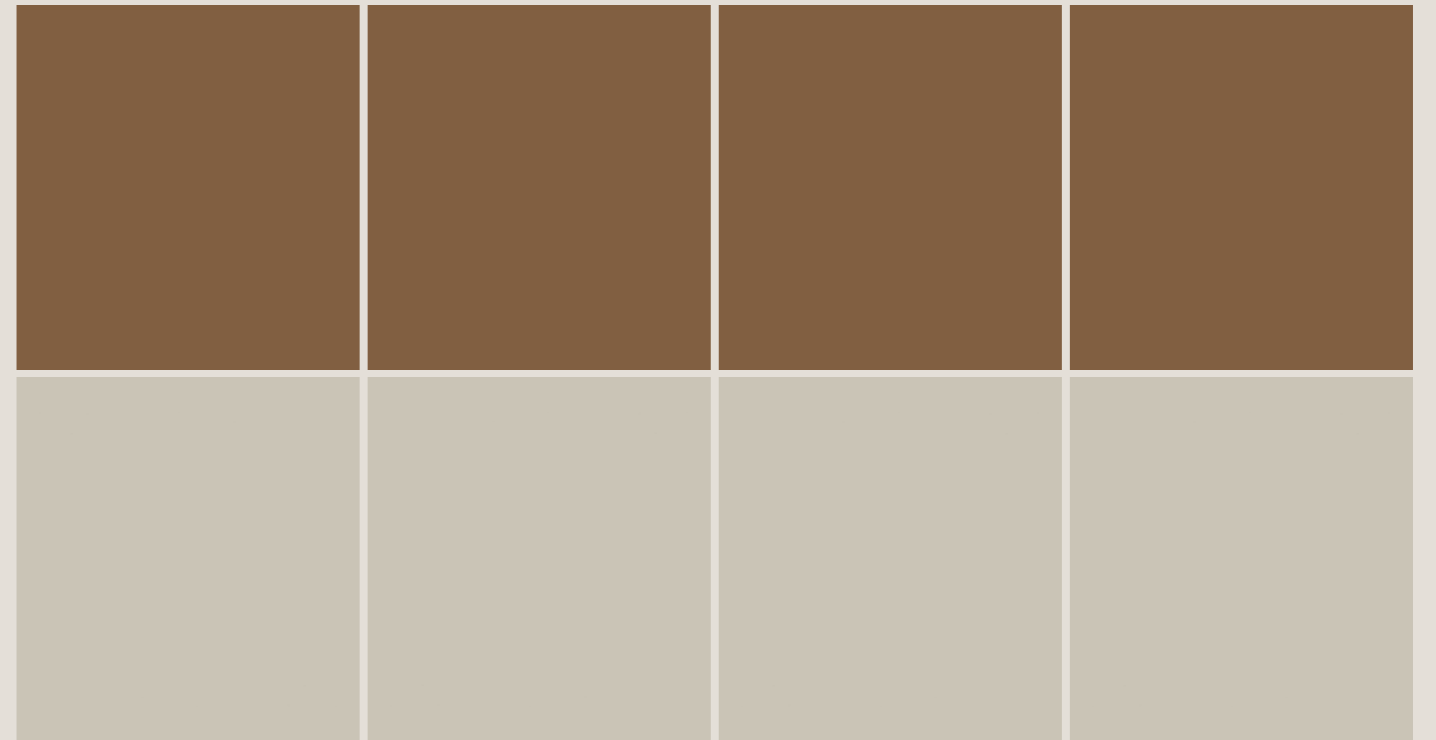
Mushroom paired with Polo delivers a composed surface language, where contrast is subtle, functional, and thoughtfully aligned with architectural flow.

Floor: Mushroom | Polo
60x60cm / 24"x24" / 2'x2'
Finish: Matt



Application: Classroom

Mushroom & Polo

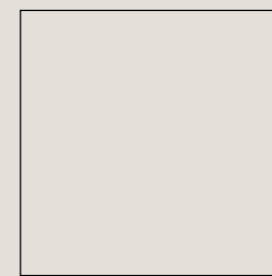


Available Sizes :

Finish: Matt



60x120cm /
24"x47" / 2'x4'

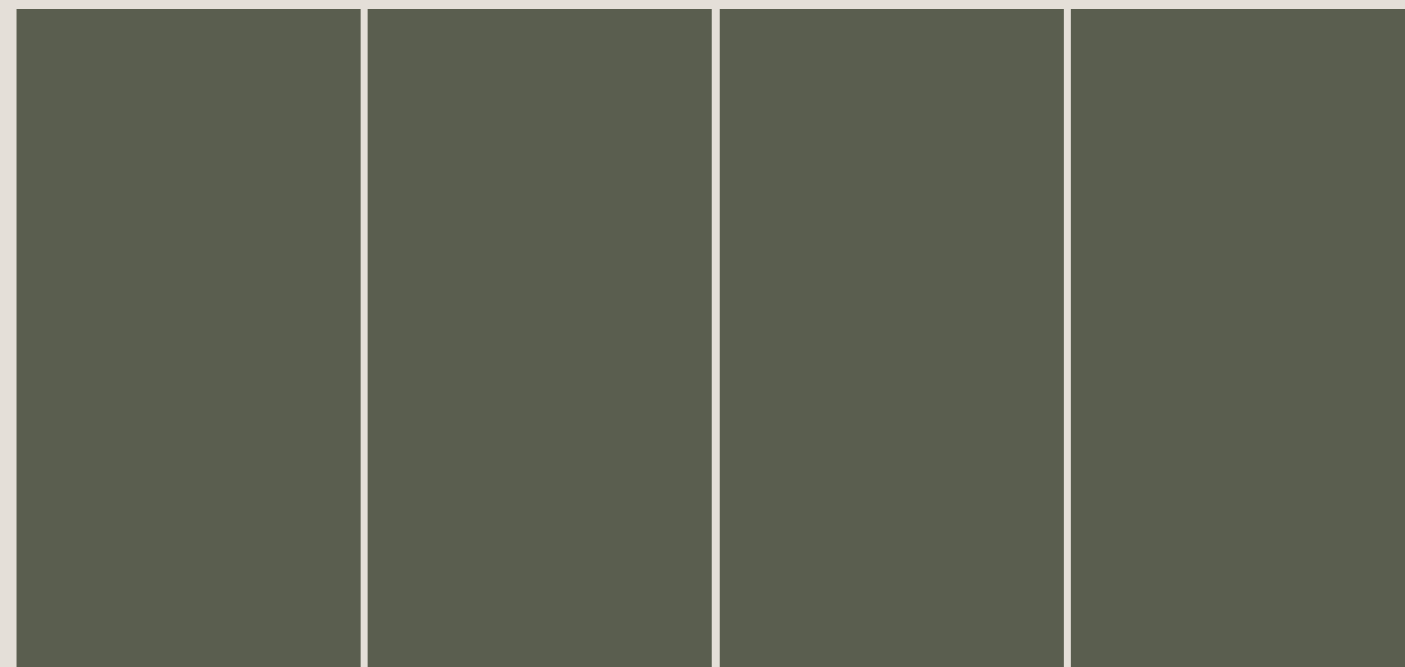


60x60cm /
24"x24" / 2'x2'

The Azzuro & Polo combination brings together soft blue and warm neutral tones that create a balanced, harmonious visual rhythm. Their matt surfaces offer a refined calmness that works beautifully in structured layouts, especially in classrooms and open spaces. This duo adds clarity, softness, and modern simplicity, giving designers a flexible palette that enhances both functionality and aesthetic comfort.



Kota Green



Available Sizes :

Finish: Matt



60x120cm /
24"x47" / 2'x4'

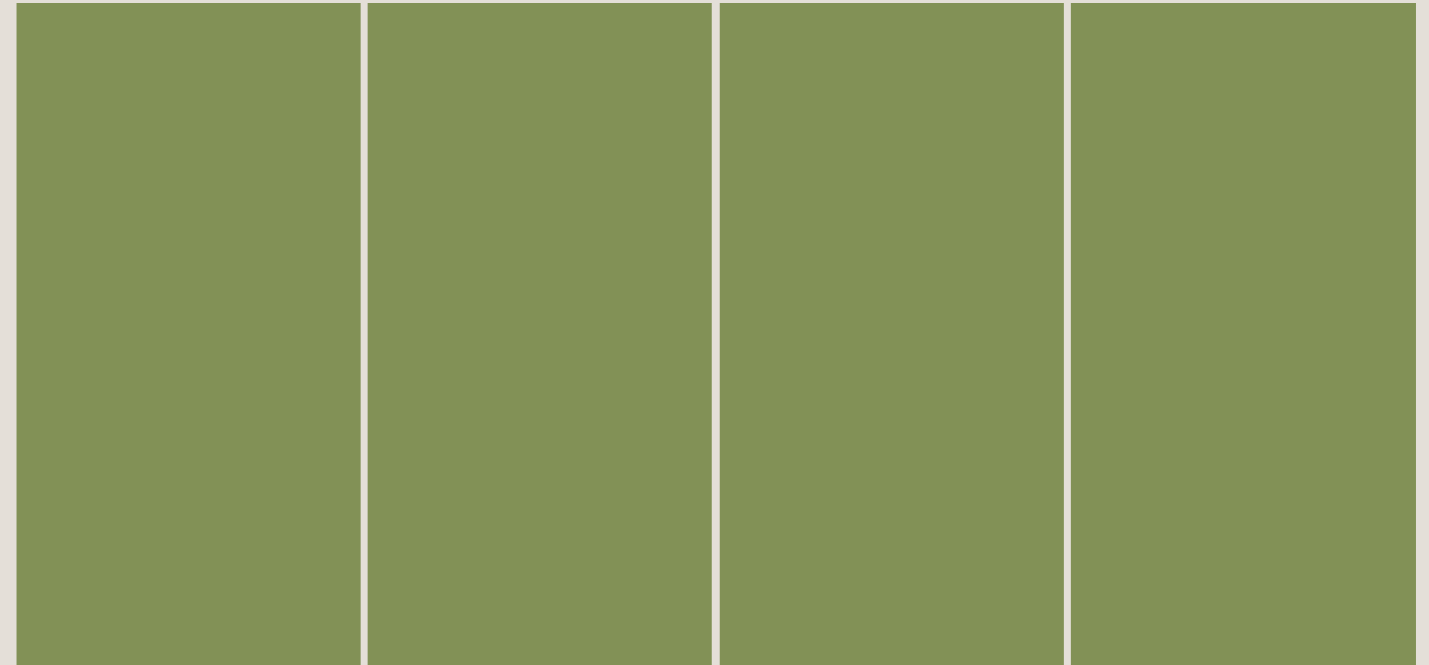


60x60cm /
24"x24" / 2'x2'

The Kota Green design draws inspiration from the earthy calm of natural stone, bringing a grounded, tranquil presence to modern interiors. Its soft matt surface enriches the deep green tone, creating a soothing backdrop that complements both minimal and warm, layered décor. Subtle tonal variations add organic depth without overwhelming the space. This design offers a balanced aesthetic that blends nature-inspired character with refined contemporary simplicity.



Jade



Available Sizes :

Finish: Matt



60x120cm /
24"x47" / 2'x4'

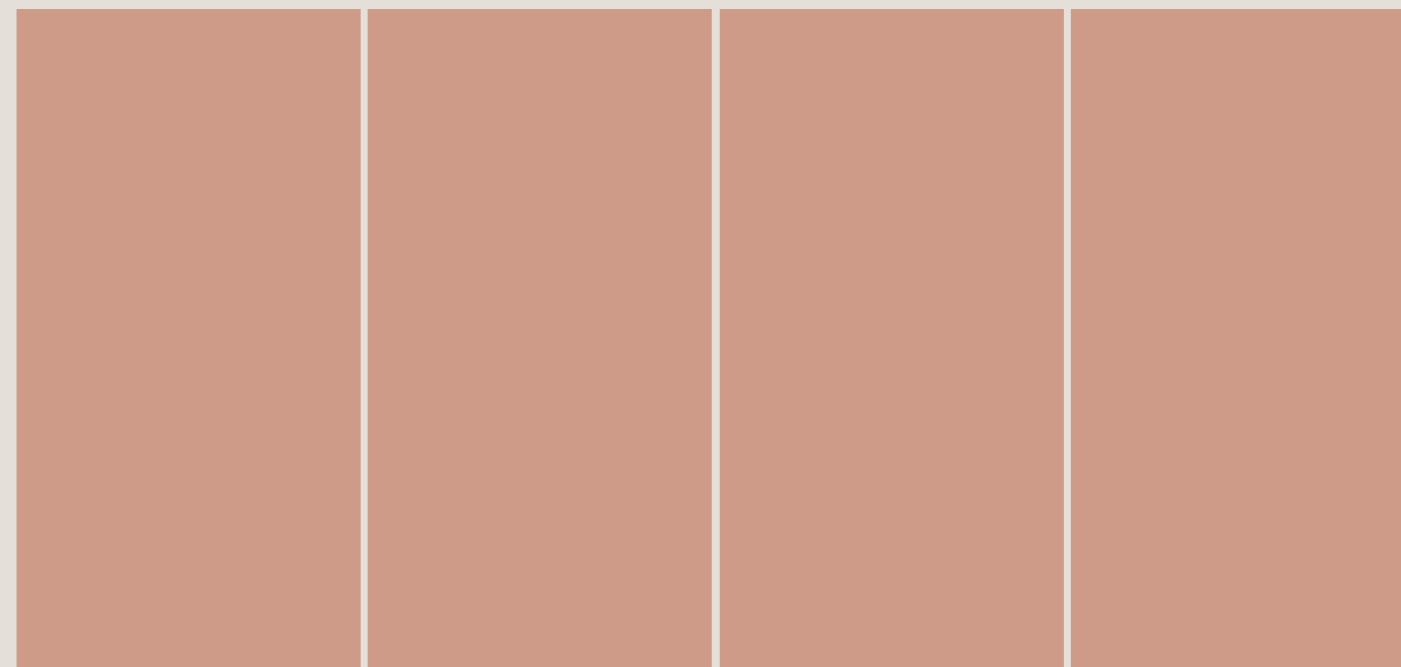


60x60cm /
24"x24" / 2'x2'

The Jade design draws from earthy mineral tones, presenting a rich green surface with soft tonal shifts that create a naturally balanced expression. Its matt finish enhances depth while keeping the look refined and contemporary, making it suitable for retail spaces and modern interiors. The surface carries gentle movement that adds quiet sophistication, offering a timeless blend of calm, structure, and subtle elegance.



Rosetta



Available Sizes :

Finish: Matt



60x120cm /
24"x47" / 2'x4'

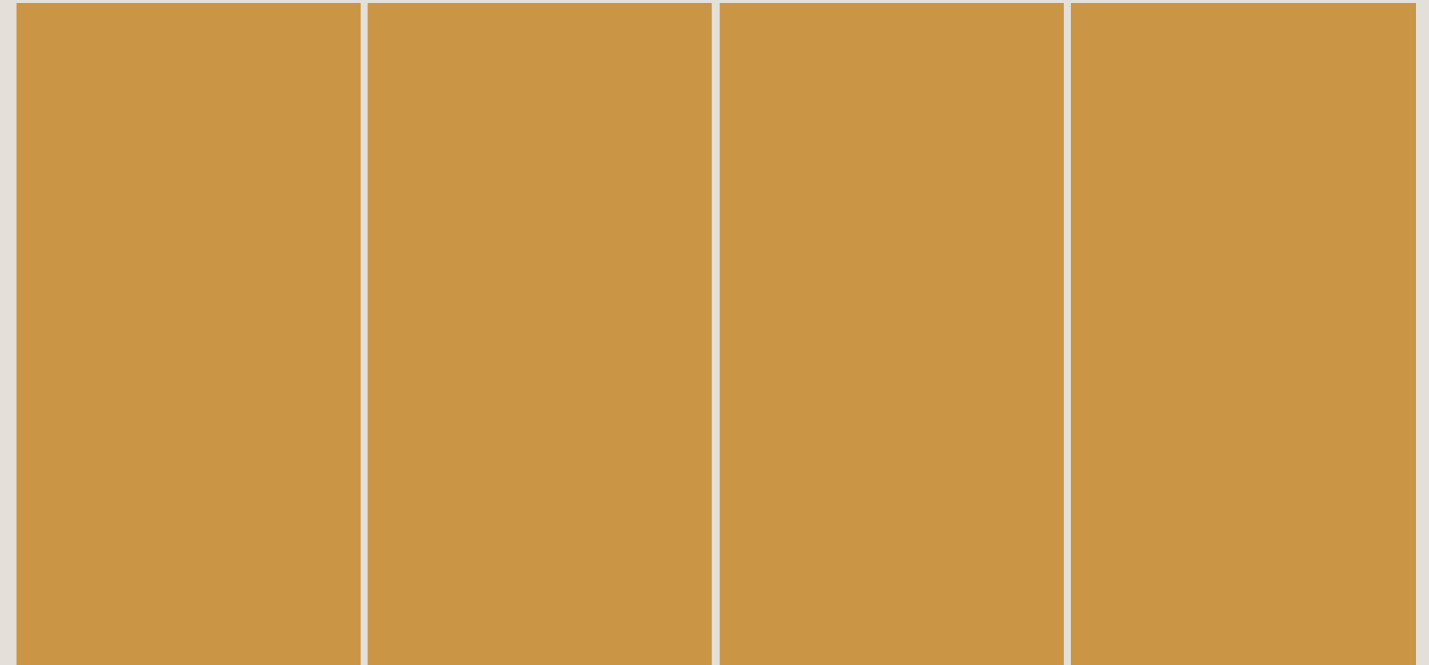


60x60cm /
24"x24" / 2'x2'

Rosetta presents a soft pastel warmth that brings a gentle, comforting tone to interior spaces. Its smooth matt surface enhances visual calmness, making it ideal for retail, bedrooms, and environments that embrace subtle elegance. This design balances color and texture with quiet refinement, offering a timeless sense of softness that elevates modern interiors with grace and serenity.



Trendy

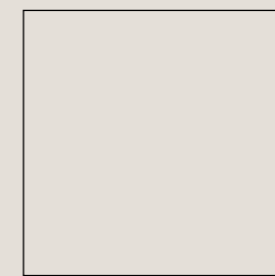


Available Sizes :

Finish: Matt



60x120cm /
24"x47" / 2'x4'

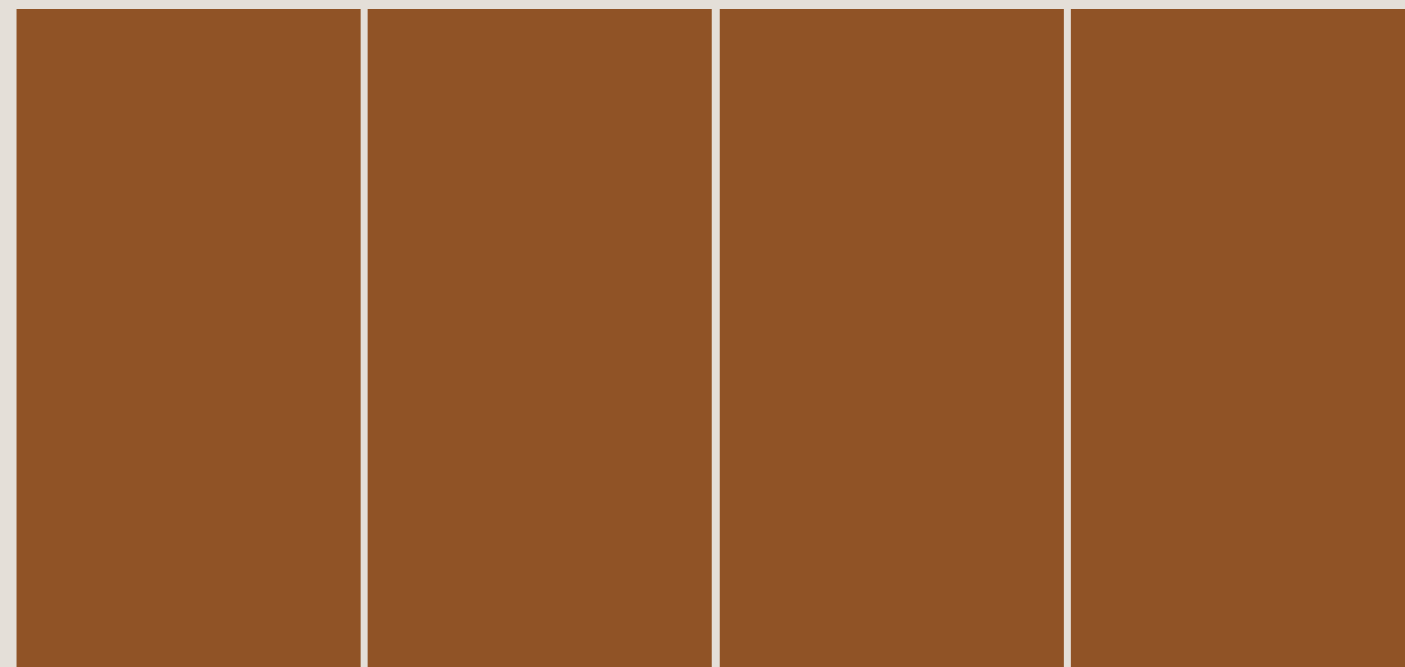


60x60cm /
24"x24" / 2'x2'

Trendy introduces a warm, contemporary character with its rich, earthy undertone that adds vibrance without overwhelming the space. Its refined matt finish softens the surface, creating a welcoming aesthetic ideal for bedrooms, lounges, and modern interiors. This design blends color depth with subtle texture, offering a timeless yet stylish expression that enhances spatial comfort and serene living.



Teracotta



Available Sizes :

Finish: Matt



60x120cm /
24"x47" / 2'x4'

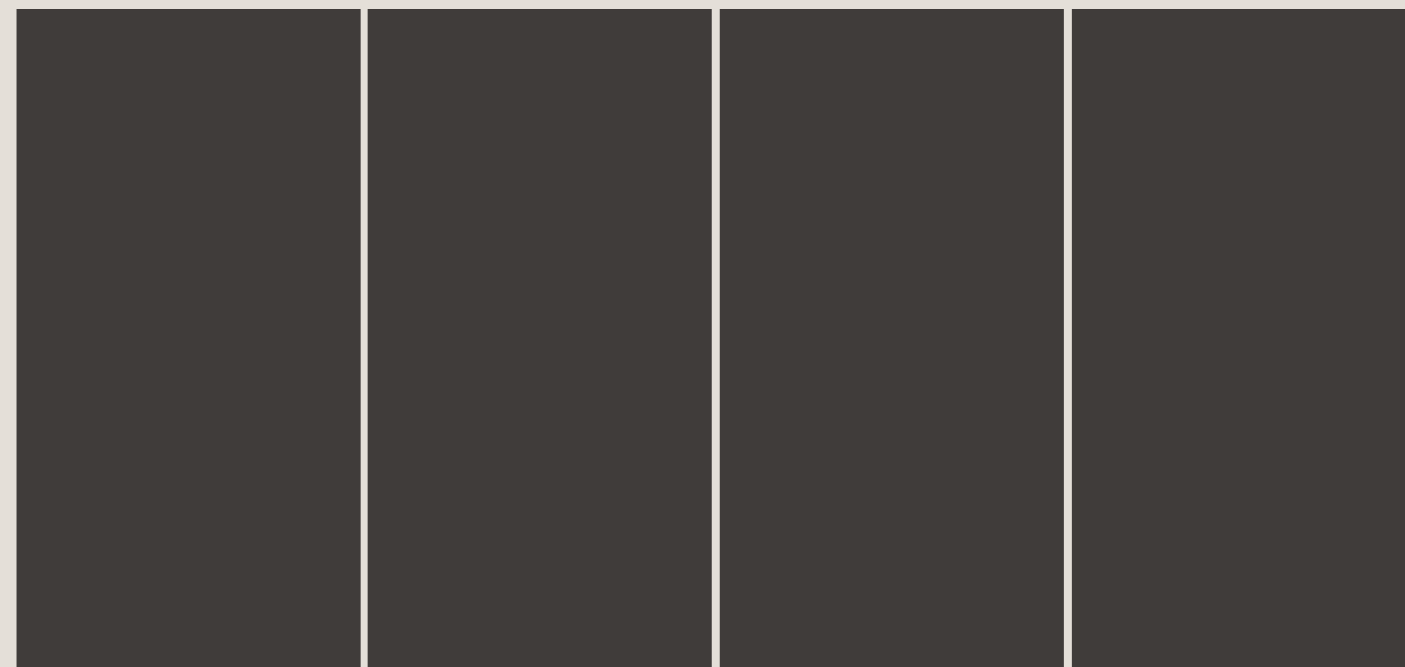


60x60cm /
24"x24" / 2'x2'

Teracotta introduces a bold, earthy presence that fills any space with natural energy. Its deep clay shade pairs effortlessly with wood, metal, and warm lighting, creating interiors that feel inviting and beautifully grounded. The matt finish softens the surface, giving it a calm, tactile appeal suited for cafés, restaurants, and lifestyle spaces. A colour designed to offer warmth, comfort, and a timeless sense of handcrafted authenticity.



Nero



Available Sizes :

Finish: Matt



60x120cm /
24"x47" / 2'x4'



60x60cm /
24"x24" / 2'x2'

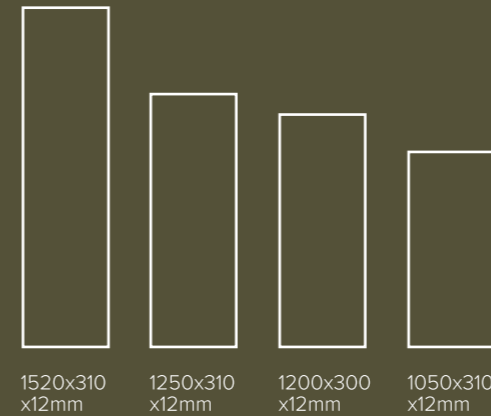
Nero brings a bold, architectural clarity to every interior with its deep, refined black tone. The matt finish softens the surface, creating a smooth, modern character that works effortlessly in retail, hospitality, and premium lifestyle spaces. Its rich depth enhances contrast and elevates surrounding materials, offering a surface that feels confident, minimal, and timelessly sophisticated.



Step Collection



Formats:



Designs:



USP:

India's Original Step Tile
 Embossed Groves
 Inbuilt Bullnose
 Easy Maintenance
 Easy Installation

Full Body Color
 Through Body Design
 Inbuilt Anti Skid Properties
 $R \geq 10$

Every surface begins with an idea. For Restile, that idea comes from the world around us. It comes from the quiet strength of natural elements and the bold precision of architectural structures. The earth gives us the textures, tones and layers that define the essence of our materials. Architecture gives us the forms, proportions and rhythms that shape how spaces are experienced.

Our collections are born from this balance between nature and structure. The Step Collection draws inspiration from movement, transitions and spatial flow. The Indust Collection takes its cues from raw industrial character, celebrating clarity, strength and honest material expression.

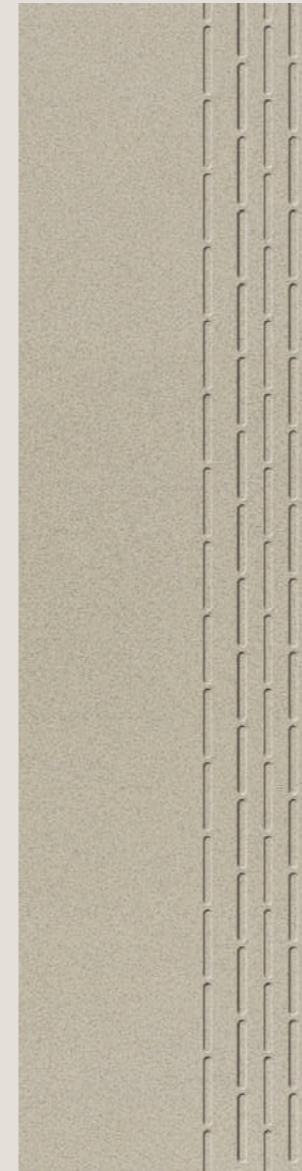
These inspirations are not simply visual references. They are the foundation of how we think, design and create. Each tile carries within it the story of its origin, transforming spaces into experiences that feel both timeless and intentional.

Inspiration lives in the details of the world. We simply give it a form that endures.

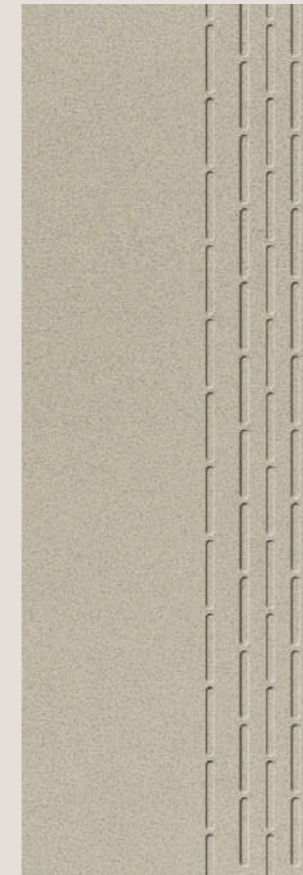
Step-up Sahara



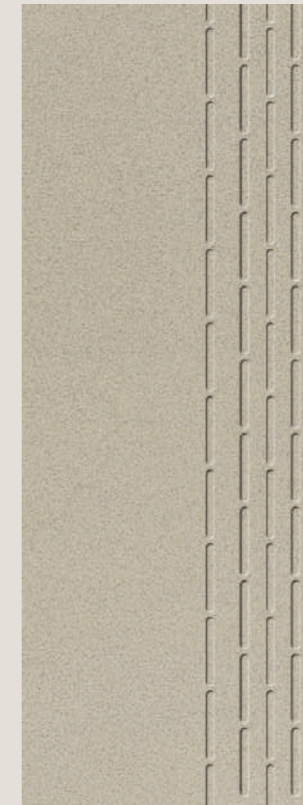
Finish: Matt



Step: 1520x310x12mm
Riser: 1520x640x9mm



Step: 1250x310x12mm
Riser: 1250x640x9mm



Step: 1200x300x12mm
Riser: 1200x600x9mm



Step: 1050x310x12mm
Riser: 1050x640x9mm

Step-up Sahara is designed for high-traffic stair applications where safety, durability, and visual continuity are essential. Its soft sand-inspired tone brings warmth to architectural steps, while the integrated linear grooves enhance grip without disrupting the surface's minimal aesthetic. The matt finish reduces glare and improves foot stability, making it ideal for public spaces such as malls, transit areas, and commercial interiors. Engineered to perform under constant use, Step-up Sahara balances functional strength with refined, understated design.

Step-up Iconic



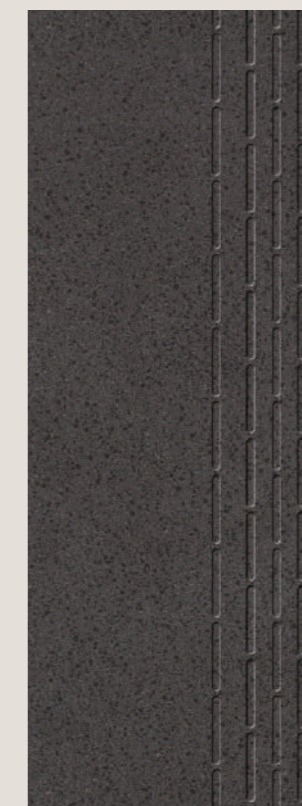
Finish: Matt



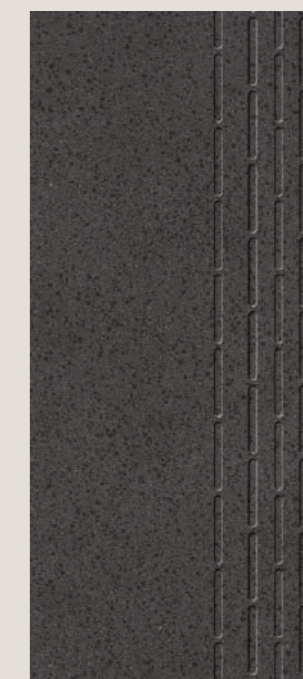
Step: 1520x310x12mm
Riser: 1520x640x9mm



Step: 1250x310x12mm
Riser: 1250x640x9mm



Step: 1200x300x12mm
Riser: 1200x600x9mm



Step: 1050x310x12mm
Riser: 1050x640x9mm

Step-up Iconic is crafted for demanding stair environments where durability and safety must meet a strong architectural presence. Its deep, refined tone brings visual clarity and structure to school steps and public circulation areas, while the integrated linear grooves enhance slip resistance without interrupting the surface's clean geometry. The matt finish controls glare and improves traction, ensuring confident movement under constant foot traffic. Designed for performance-led spaces, Step-up Iconic delivers long-term reliability with a bold, minimal aesthetic.

Step-up Pebbles



Finish: Matt



Step: 1520x310x12mm
Riser: 1520x640x9mm



Step: 1250x310x12mm
Riser: 1250x640x9mm



Step: 1200x300x12mm
Riser: 1200x600x9mm



Step: 1050x310x12mm
Riser: 1050x640x9mm

Step-up Pebbles introduces a softer, textured expression designed for high-traffic stairways in public and commercial spaces. The subtle pebble-inspired grain adds visual depth while enhancing grip underfoot, supporting safe movement across mall steps and shared circulation areas. Its matt surface reduces glare and maintains consistent traction, even under continuous use. Balanced in character and performance, Step-up Pebbles blends functional safety with a calm, refined architectural finish.

Step-up Kota Green



Finish: Matt



Step: 1520x310x12mm
Riser: 1520x640x9mm



Step: 1250x310x12mm
Riser: 1250x640x9mm



Step: 1200x300x12mm
Riser: 1200x600x9mm



Step: 1050x310x12mm
Riser: 1050x640x9mm

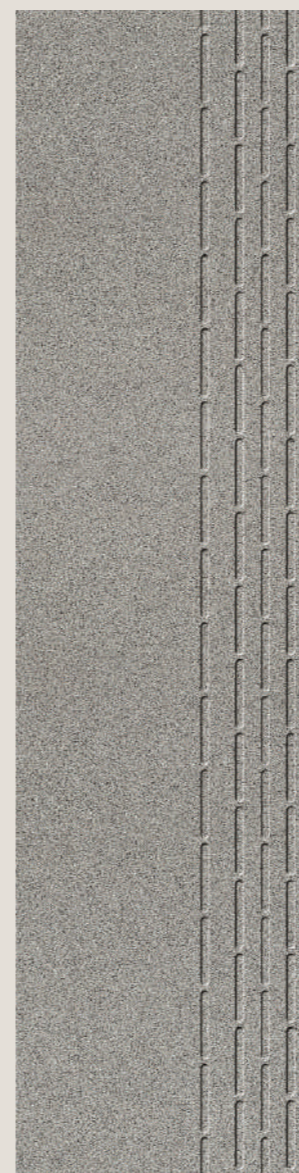
Step-up Kota Green brings a grounded, natural character to stair applications within professional and institutional spaces. Inspired by stone-rich tones, its muted green surface offers visual calm while maintaining strong anti-slip performance for everyday movement. The finely controlled texture supports secure footing without visual noise, making it ideal for office steps and internal circulation zones. Balanced in appearance and function, Step-up Kota Green delivers durability, safety, and understated architectural elegance.



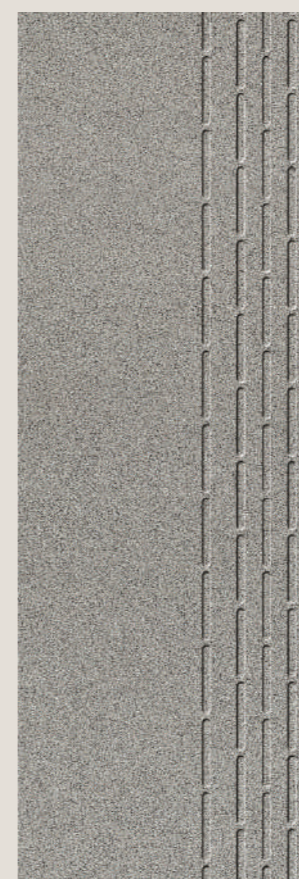
Step-up Elena



Finish: Matt



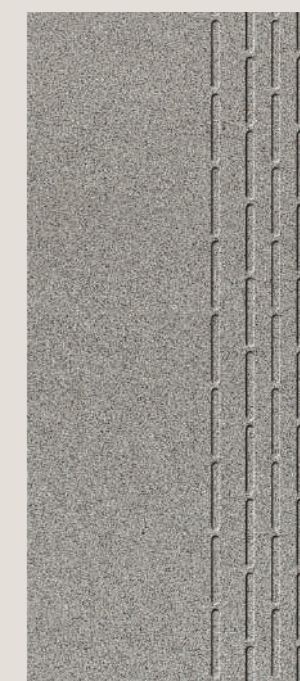
Step: 1520x310x12mm
Riser: 1520x640x9mm



Step: 1250x310x12mm
Riser: 1250x640x9mm



Step: 1200x300x12mm
Riser: 1200x600x9mm



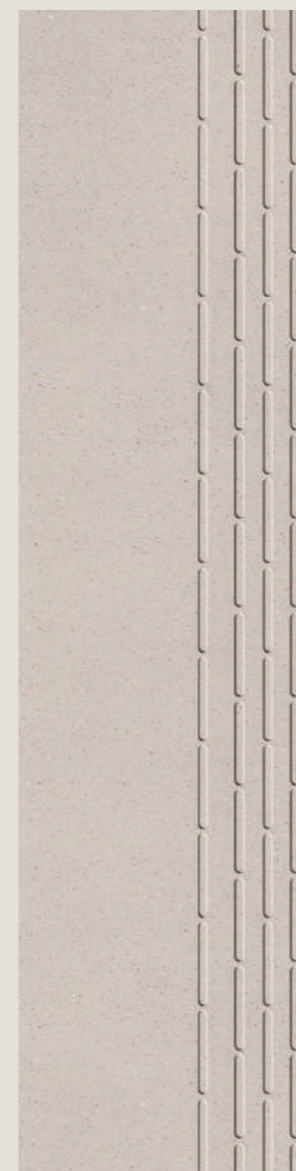
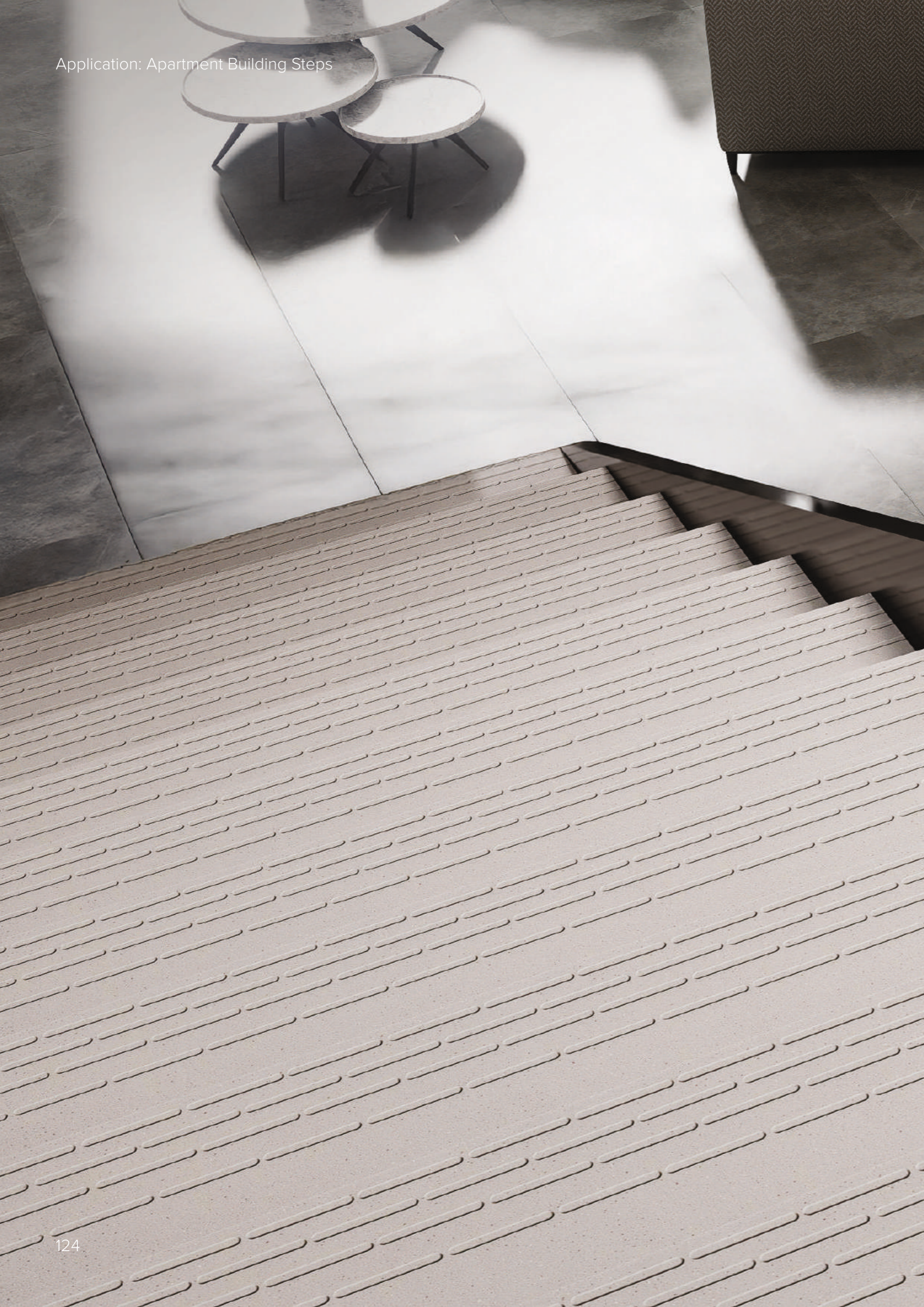
Step: 1050x310x12mm
Riser: 1050x640x9mm

Step-up Elena offers a refined balance of softness and strength, designed for residential and multi-unit stair applications. Its light, stone-inspired surface enhances spatial openness while maintaining reliable grip through its structured matt finish. The subtle texture ensures safe movement without disrupting visual continuity, making it ideal for apartment buildings and shared interiors. Calm in expression yet durable in performance, Step-up Elena supports everyday circulation with quiet architectural confidence.

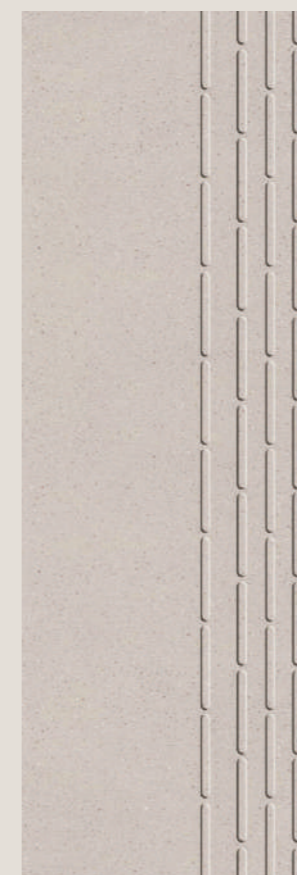
Step-up Luna



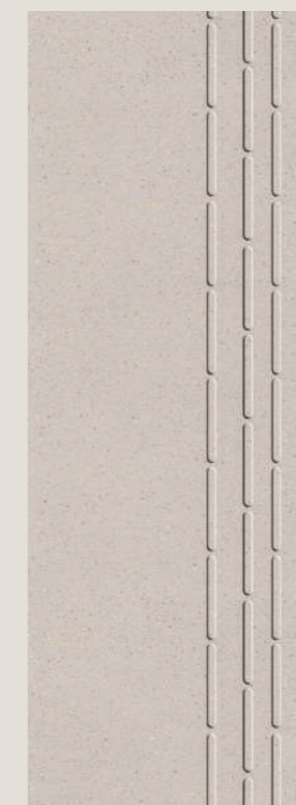
Finish: Matt



Step: 1520x310x12mm
Riser: 1520x640x9mm



Step: 1250x310x12mm
Riser: 1250x640x9mm



Step: 1200x300x12mm
Riser: 1200x600x9mm



Step: 1050x310x12mm
Riser: 1050x640x9mm

Step-up Luna expresses a clean, contemporary character through its light tone and finely detailed surface. Designed for apartment and shared residential staircases, it enhances brightness while maintaining secure footing with its matt, structured finish. The linear detailing adds subtle movement without visual noise, supporting calm transitions between levels. Balanced and refined, Step-up Luna delivers everyday safety with a soft architectural presence.



Impacta Collection



Heavy-Duty Industrial Tiles

Formats:

Thickness: 14mm / 20mm



60x60cm

30x60cm

30x30cm

Designs:



Super Polo

Polo

Steel Grey

Elena



Teracotta

USP:

Heavy Duty
Industrial Flooring
Strength Unmatched BS > 6000
Anti Skid Properties R > = 10

Full Body Color
Through Body Design
Unique Restile Matt
Superior Quality

Every surface begins with a purpose. For Impacta, that purpose is strength shaped by design. Inspired by the resilience of industrial environments and the clarity of engineered spaces, this collection reflects confidence through structure and material honesty.

Concrete tones, solid textures and balanced surfaces come together to define spaces that demand performance without visual noise. Impacta is born from the intersection of durability and intent, where functionality guides form and supports long-term use.

Each tile is crafted to endure pressure, movement and time. The collection is engineered to perform under heavy conditions while maintaining visual consistency across large surfaces.

Impacta transforms utilitarian flooring into a stable architectural foundation, delivering reliability, safety and a refined industrial expression that stands firm over time. Its restrained surface language allows architecture and movement to take precedence without distraction.

Impacta Collection

Application Areas



Application Areas of Impacta Tiles



Food Factory



Beverage Industry



Brewery Factory



Super Markets



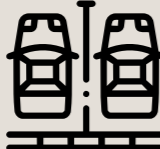
Auto Industry



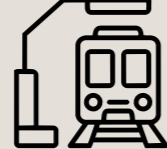
Textile industry



Packaging Industry



Parking Areas

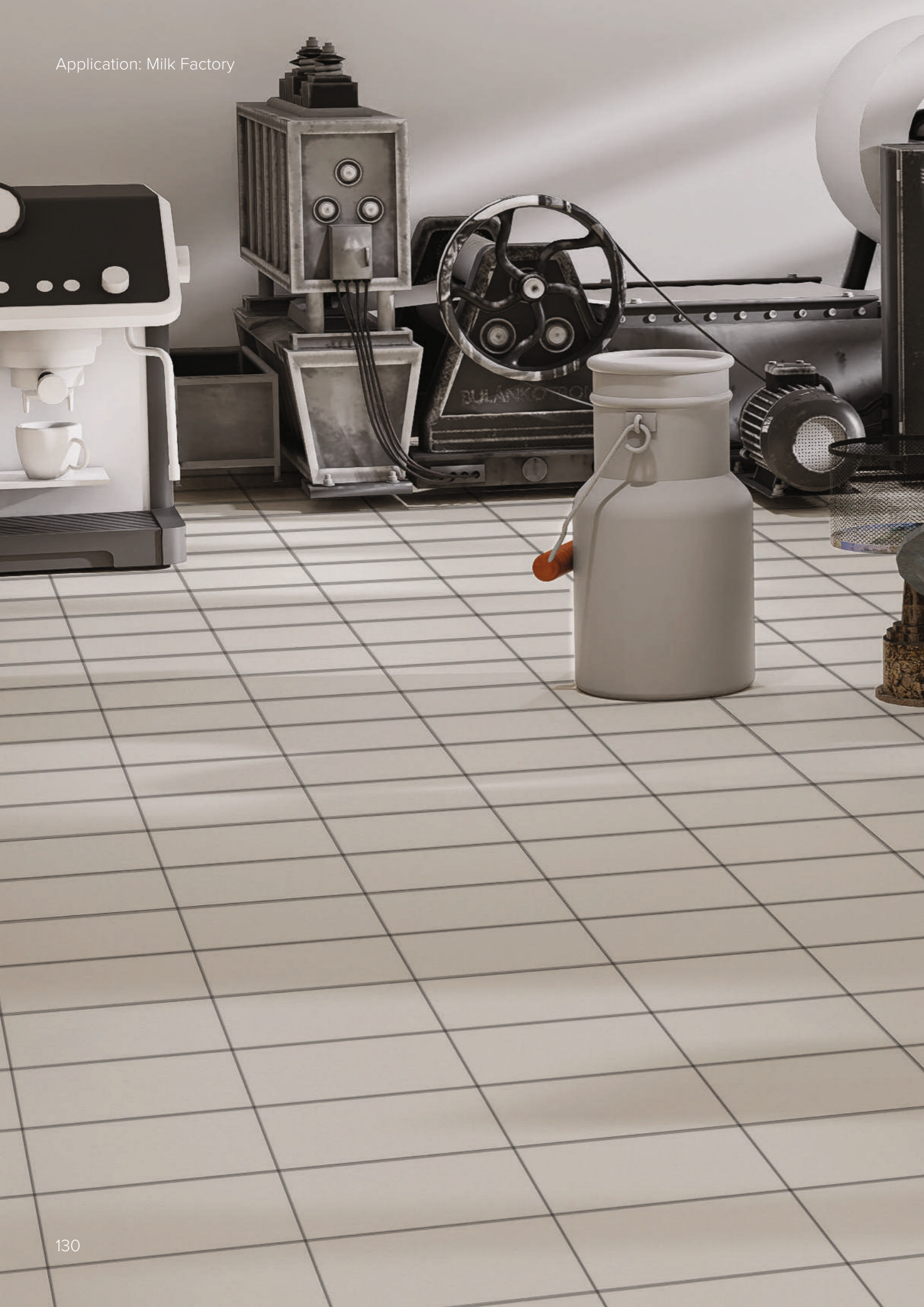


Railway Stations

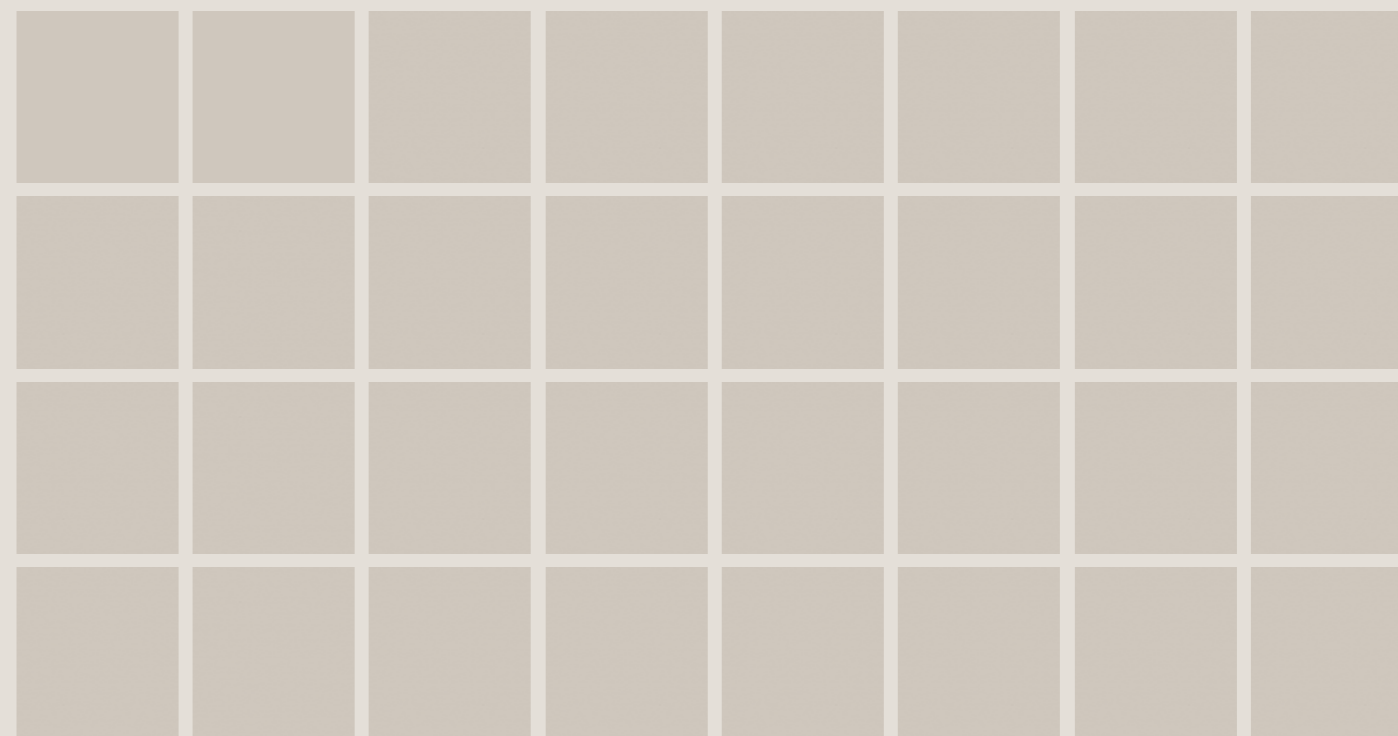
Advantages of Impacta Tiles

- Full Body Homogeneous
- Highest Mechanical Load Possible
- Unglazed Surface Finish
- High Temperature Resistant
- Water Absorption < 0.06%
- Ideal for Wet Areas
- Resistant to Abrasion
- Easy to Maintain & Clean
- Consistent Density Top to Bottom
- Ideal for Wet Areas
- Chemical & Stain Resistant
- One Time Solution - Lasts for Decades!





Super Polo



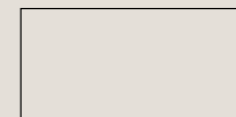
Available Sizes :

Finish: Matt

14mm / 20mm Thickness



60x60cm /
24"x24" / 2'x2'



30x60cm /
12"x24" / 2'x2'

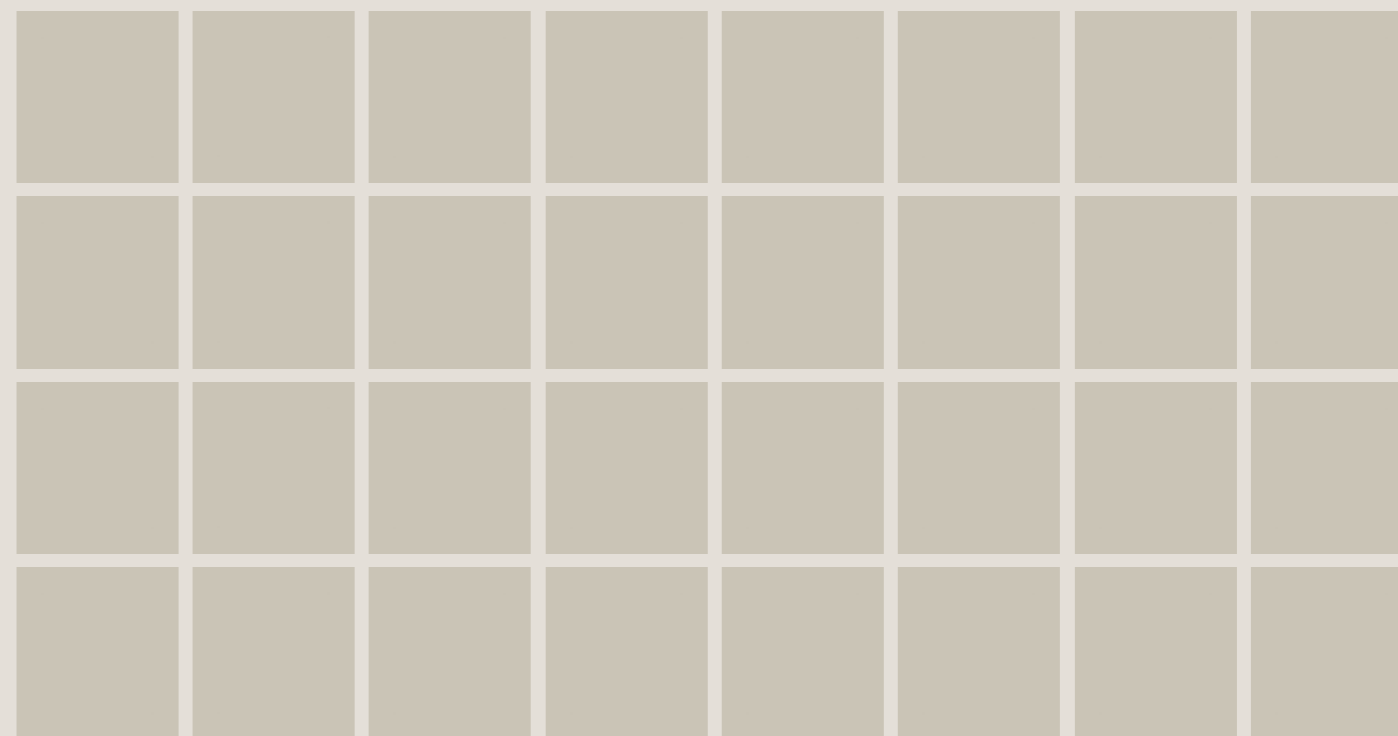


30x30cm /
12"x12" / 1'x1'

Super Polo delivers a calm, uniform surface designed for high-use industrial and utility environments. Its soft neutral tone balances functionality with visual clarity, making it ideal for factories, processing zones, and service areas. The matt finish minimizes glare while supporting slip resistance and easy maintenance. Durable and composed, Super Polo creates structured floors that perform consistently under daily operational demands.



Polo



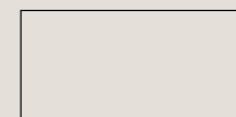
Available Sizes :

Finish: Matt

↕ 14mm / 20mm Thickness



60x60cm /
24"x24" / 2'x2'



30x60cm /
12"x24" / 2'x2'

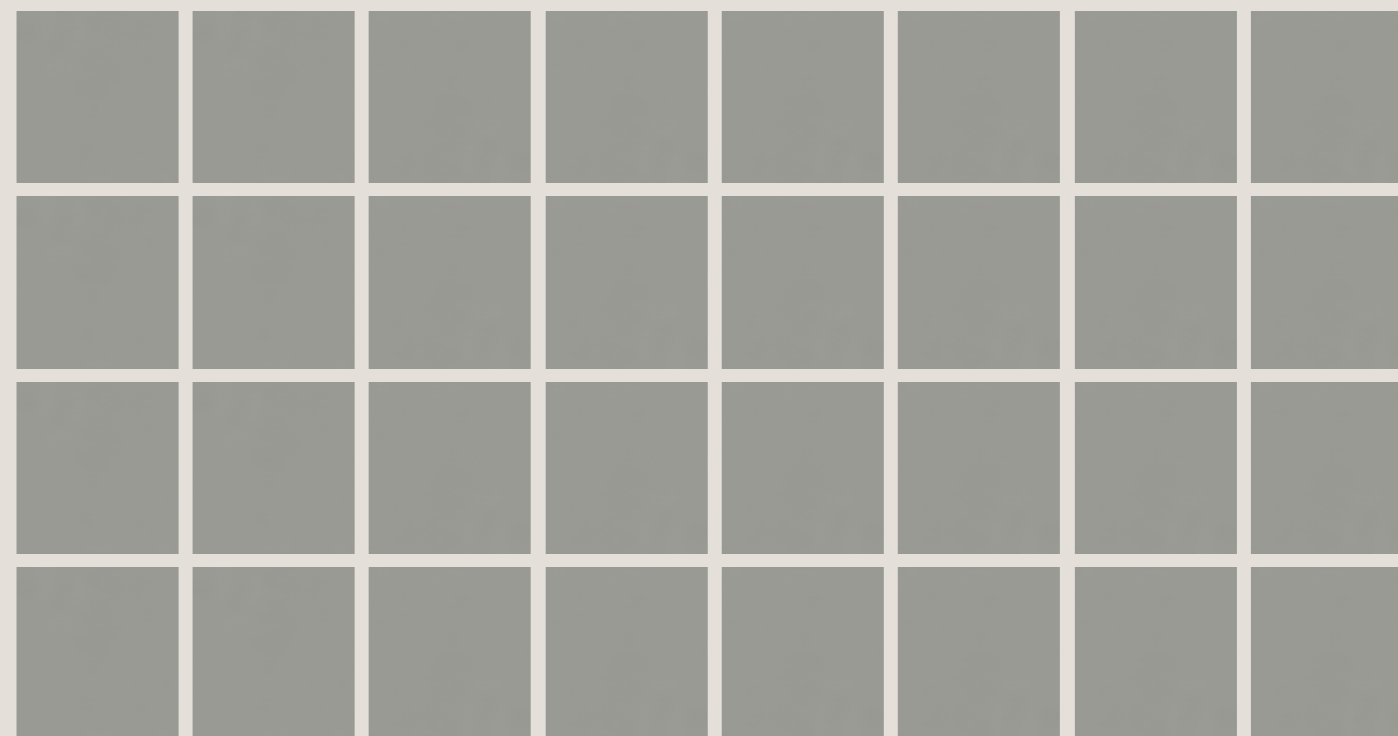


30x30cm /
12"x12" / 1'x1'

Polo offers a refined, balanced surface crafted for everyday commercial and retail environments. Its light, neutral shade enhances brightness while maintaining a clean and organized visual flow. The matt finish reduces reflections and supports safe movement in high-traffic areas such as supermarkets and service counters. Reliable and understated, Polo creates floors that feel open, efficient, and consistently composed across active spaces.



Steel Grey



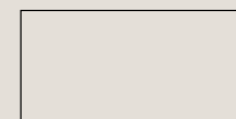
Available Sizes :

Finish: Matt

↓ ↑ 14mm / 20mm Thickness



60x60cm /
24"x24" / 2'x2'



30x60cm /
12"x24" / 2'x2'

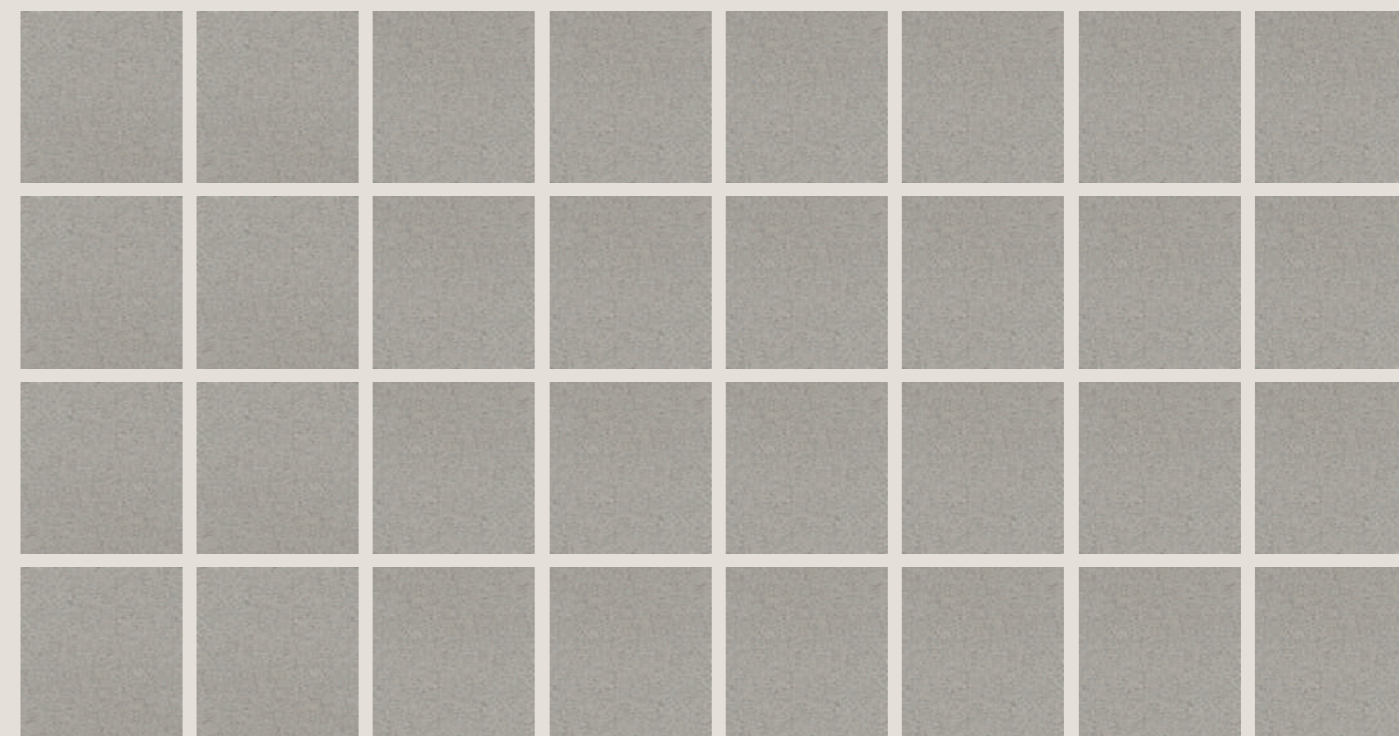


30x30cm /
12"x12" / 1'x1'

Steel Grey presents a clean, contemporary surface suited for modern commercial and showroom environments. Its cool, balanced tone enhances spatial clarity while complementing metal, glass, and refined interiors. The matt finish minimizes glare and supports controlled movement in high-traffic areas. Strong yet subtle, Steel Grey delivers a composed flooring solution that maintains visual order and long-term performance in demanding spaces.



Elena



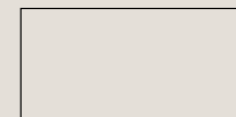
Available Sizes :

Finish: Matt

↕ 14mm / 20mm Thickness



60x60cm /
24"x24" / 2'x2'

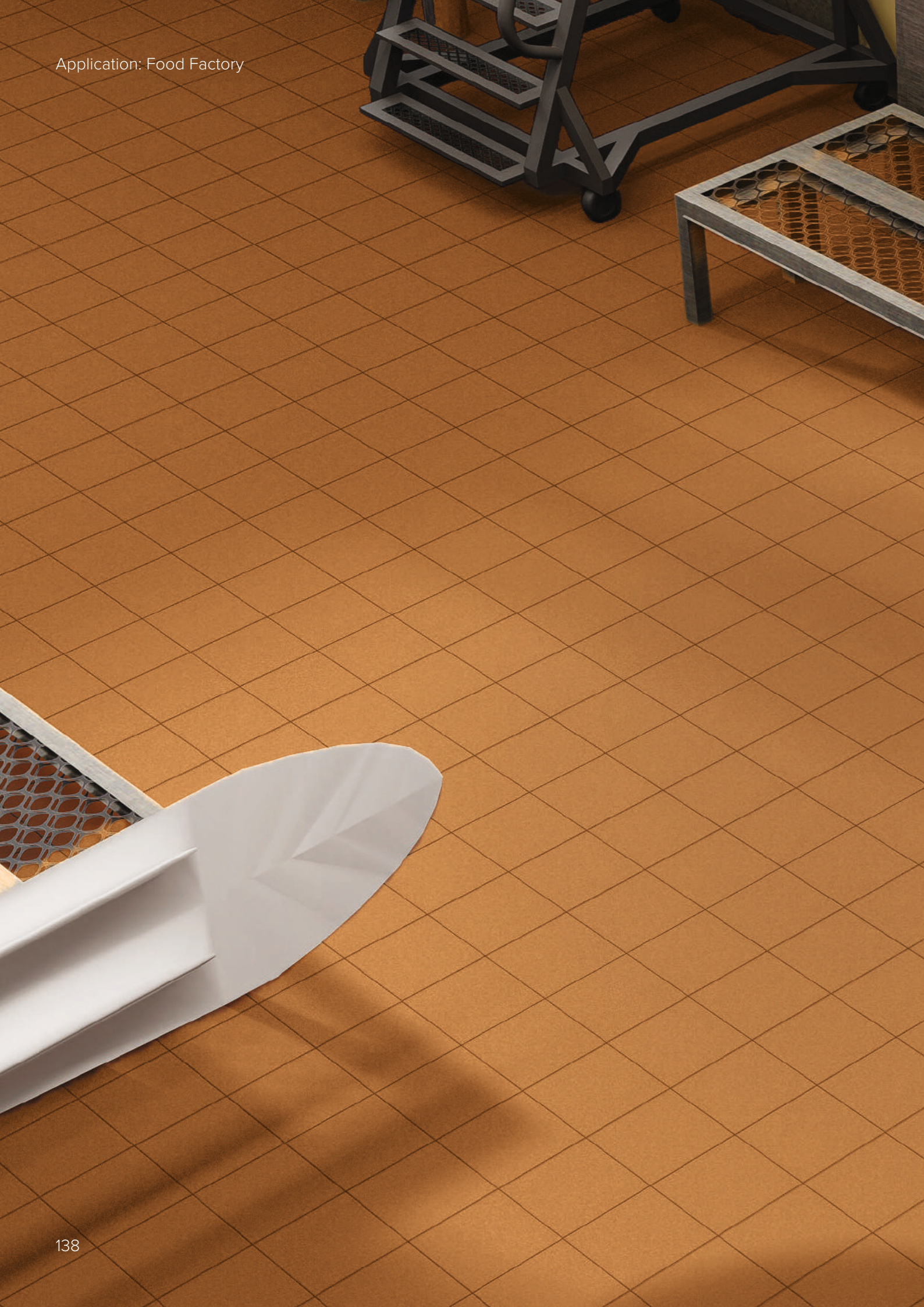


30x60cm /
12"x24" / 2'x2'

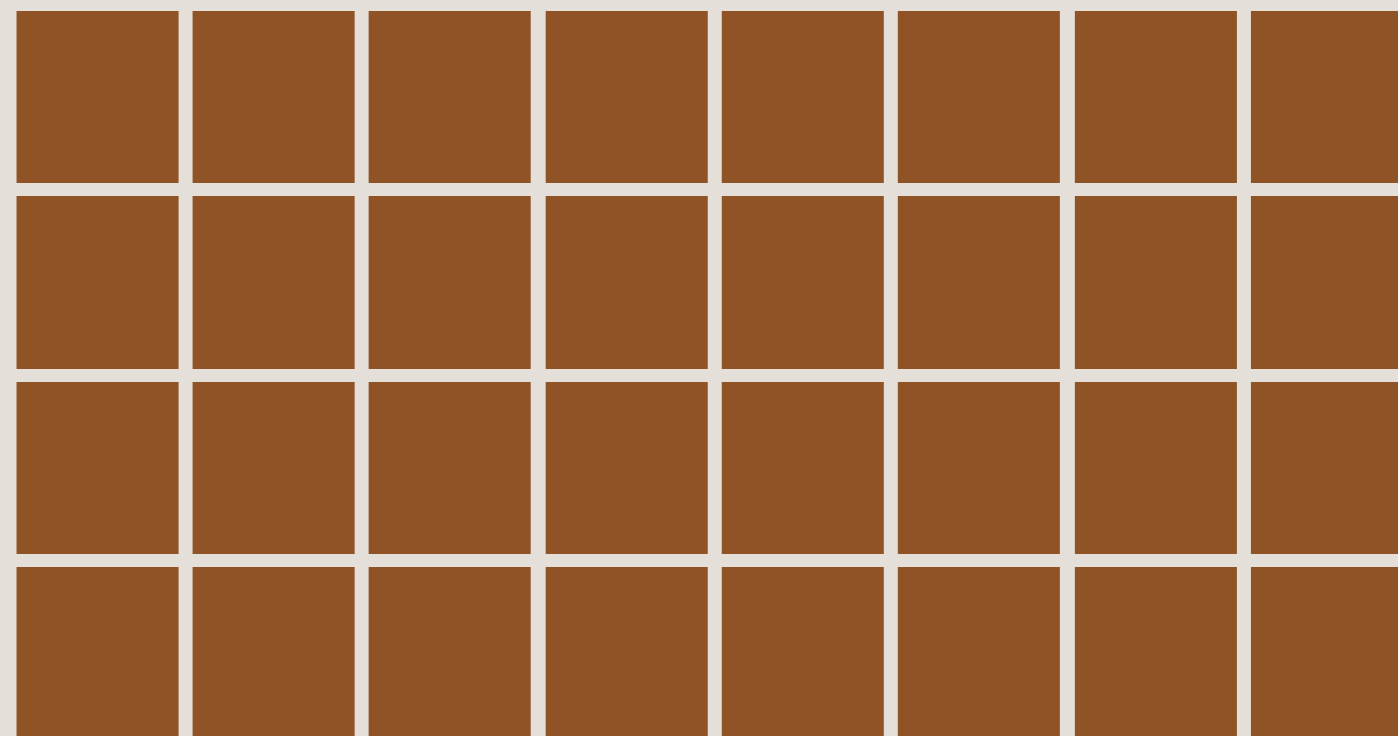


30x30cm /
12"x12" / 1'x1'

Elena brings a refined grain texture that balances visual interest with everyday practicality. Its evenly distributed speckled surface creates depth without distraction, making it ideal for exterior and semi-outdoor applications. The matt finish ensures reduced glare and confident grip under changing conditions. Durable and composed, Elena offers a surface that supports movement while maintaining a clean, architectural presence.



Teracotta



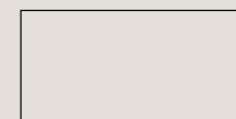
Available Sizes :

Finish: Matt

14mm / 20mm Thickness



60x60cm /
24"x24" / 2'x2'



30x60cm /
12"x24" / 2'x2'



30x30cm /
12"x12" / 1'x1'

Teracotta draws strength from earthy warmth and time-worn character. Its rich tone anchors spaces with a grounded presence while the matt surface maintains control in demanding environments. Designed for work-intensive settings, it supports hygiene, movement, and visual order with ease. Teracotta delivers a surface that feels robust, familiar, and purpose-driven without losing architectural clarity.

Global Network



Factory Address	Bell Granito Ceramica Limited Village Gavasad, Taluka Padra District Vadodara - 391430 Gujarat, India	E: info@restile.com W: www.restile.com
Exports	Mr. Harinatha Reddy E: exports@restile.com M: +62 8158855781	Address: 5th Floor, 501 The Honey Lady Building Jln Pluit Selatan Raya Kawasan Cbd Pluit, Jakarta 14440 Indonesia
North India	Mr. Jay Jethwa	E: jay.jethwa@restile.com M: +91 99744 08673
East India	Mr. Jay Jethwa	E: jay.jethwa@restile.com M: +91 99744 08673
Rajasthan	Mr. Jay Jethwa	E: jay.jethwa@restile.com M: +91 99744 08673
Gujarat, Madhya Pradesh	Mr. Nikunj Raval	E: nikunj.rawal@restile.com M: +91 76000 55820
Maharashtra, Chhattisgarh	Mrs. Hasmita Chauhan	E: hasmita.taunk@restile.com M: +91 77380 60818
Karnataka	Mrs. Hasmita Chauhan	E: hasmita.taunk@restile.com M: +91 77380 60818
Andhra Pradesh, Telangana, Tamil Nadu, Kerala	Mr. Amit Vaghela	E: amit.vaghela@restile.com M: +91 74860 15781

restile.com